



Republic of the Philippines
Department of Agriculture
Bureau of Agricultural Statistics

Situation Report on Major Non-Food and Industrial Crops

January-March 2008

Vol. 1

No. 1



June 2008

Explanatory Notes

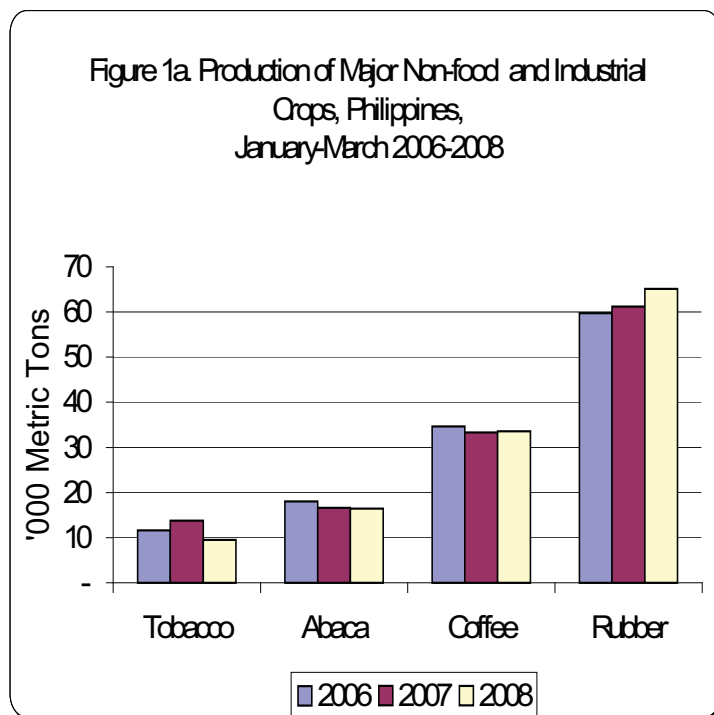
Starting this year, 2008, the Bureau of Agricultural Statistics (BAS) is coming out with a quarterly situation report on major non-food and industrial crops, namely, abaca, coconut, coffee, rubber, sugarcane and tobacco. These crops are highlighted in the BAS quarterly report on the Performance of Agriculture. Regular features are information on production, prices and trade. Data on area planted in the case of permanent crops and area harvested for temporary crops, and number of bearing trees that are collected every semester will be reported during the second and fourth quarter issues.

Production data are based on the results of the quarterly Crop Production Survey of BAS. Data on prices are sourced from the Farm Price Survey (FPS) and the Integrated Agricultural Marketing Information System-Agricultural Marketing News Service (AGMARIS-AMNEWSS). Data on millsite and wholesale prices of raw sugar are sourced from the Sugar Regulatory Administration (SRA) and retail prices of brown sugar are from the Metro Manila Operations Center (MMOC) of the BAS. The report incorporates data on foreign trade which are obtained from the National Statistics Office (NSO) and organized by the Agricultural Marketing Statistics Analysis Division (AMSAD) of the BAS. Due to the lag in their availability, export and import data may not cover the whole quarter being reported.

A. Production, January-March 2008

Abaca. This year's January-March *abaca* production reached 16.43 thousand MT, 1.31 percent lower than last year's 16.65 thousand MT. The decrease was attributed to the effects of bunchy top and mosaic diseases in abaca farms in Mahaplag, Leyte and Sogod, Southern Leyte. Another reason for the decline was the frequent rains that slowed down harvesting and drying in Albay, Eastern Samar and Bukidnon.

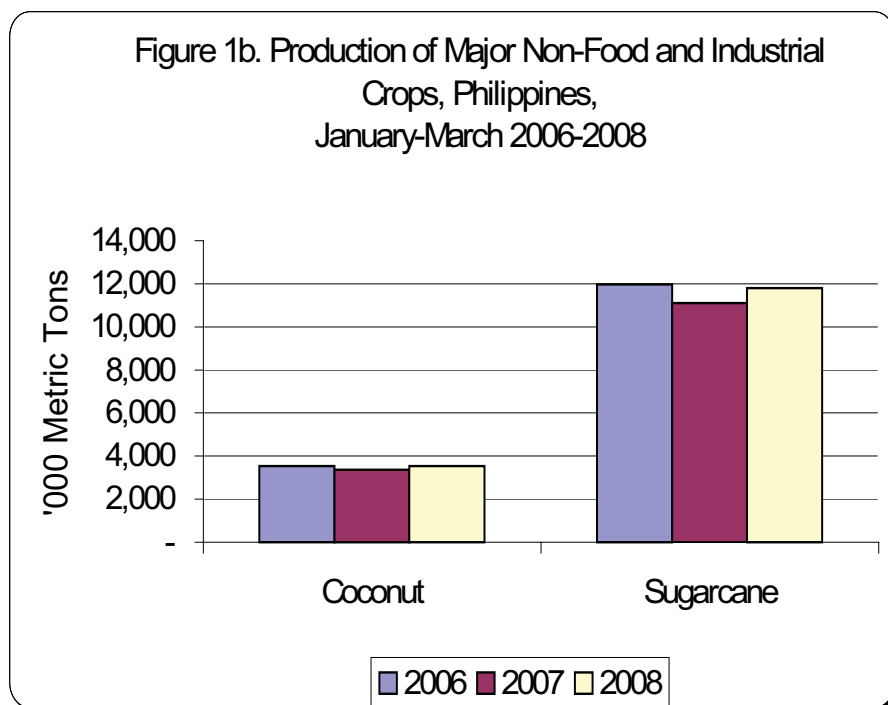
Coffee. Production increased by 0.70 percent, from 33.31 thousand MT in 2007 to 33.54 thousand MT in 2008. *Robusta* production was 25.67 thousand MT in 2008 compared to 25.44 thousand MT in 2007. *Robusta* contributed about 77 % to total coffee production. *Arabica* production also increased to 5.21 thousand MT in 2008 from 5.18 thousand MT in 2007. The growth in output was attributed to sufficient rainfall in Cavite and Sultan Kudarat and rejuvenation of coffee trees in Bulacan. On the other hand, production of *excelsa* and *liberica* dropped by 0.93 percent and 1.60 percent, respectively.



Tobacco. Production dropped significantly by 30.72 percent, from 13.74 thousand MT metric tons in January-March 2007 to 9.52 thousand MT in 2008. *Virginia* tobacco, which accounted for 95% of the total produce had an estimated production of 9.08 thousand MT. This was 31.65% lower compared to 13.29 thousand MT in 2007 due to shifting to corn, pepper, eggplant, ampalaya and watermelon in Ilocos Sur and to Burley variety in Ilocos Norte. The effects of bacterial wilt in some tobacco plants aside from shifting to watermelon in La Union also contributed to the decrease in tobacco output.

Rubber. Production increased by 6.38 percent to 65.11 thousand MT in 2008 from 61.21 thousand MT in 2007. The expansion in output was contributed by the sustained high price of natural rubber; increased number of trees that were tapped and effects of sufficient rainfall in SOCCSKSARGEN, Zamboanga Peninsula and in the provinces of Compostela Valley and Agusan del Sur.

Coconut. Production of both *mature and young nuts (buco)* increased in the first quarter of 2008. Mature coconut production reached 3,465 thousand MT, 5.04 percent higher than last year's 3,298 thousand MT. The increase was largely attributed to the recovery of coconut trees from the effects of typhoons Milenyo and Reming in the last



quarter of 2006 in Bicol Region and MIMAROPA and in the province of Quezon. The increasing price of copra encouraged farmers to increase production in Northern Mindanao, Eastern Visayas and SOCCSKSARGEN. Young coconut production was 73 thousand MT; 7.86 percent above the 68 thousand MT output in the same period of 2007. This was due to increasing demand for buco juice and other products from coconut in Cagayan Valley, Zamboanga Peninsula and Central Visayas.

Sugarcane. Cane output in January-March 2008 was estimated at 11,807 thousand MT, up by 6.27 percent from the 11,110 thousand MT in 2007. *Sugarcane for centrifugal sugar*, which shared 99% to total sugarcane production improved by 6.39 percent. The output gain was attributed to movement of harvesting from the 4th quarter of 2007 to the first quarter of 2008 due to continuous rains that brought production increase in Negros Occidental, the top-producing province. The planting of high yielding varieties of *sugarcane* such as VMC 84-524/549 and 87-599 in Tarlac also contributed to increased output. Meanwhile, the increased in area harvested in Mountain Province, sustained demand in Ilocos Sur and La Union increased production of *sugarcane for basi and vinegar* by 8.57 percent. Production of *sugarcane for chewing* also went up by 51.19 percent. Although production of *sugarcane for panocha and muscovado* expanded by 6.79 percent and 4.11 percent in Tarlac and Sultan Kudarat, respectively, due to increased market demand, total production still dropped by 6.15 percent. The decline in output was traced to delayed harvesting in Antique as a result of northeast monsoon rains, repair of a muscovado mill in Negros Occidental and shifting to palay and yellow corn in Pangasinan.

B. Prices, January to March 2008

Abaca

At *farmgate*, price of *abaca* for the first quarter of 2008 averaged P38.82 per kilogram. This was P5.35 above the quotation in 2007 and P4.64 more than the 2006 average price.

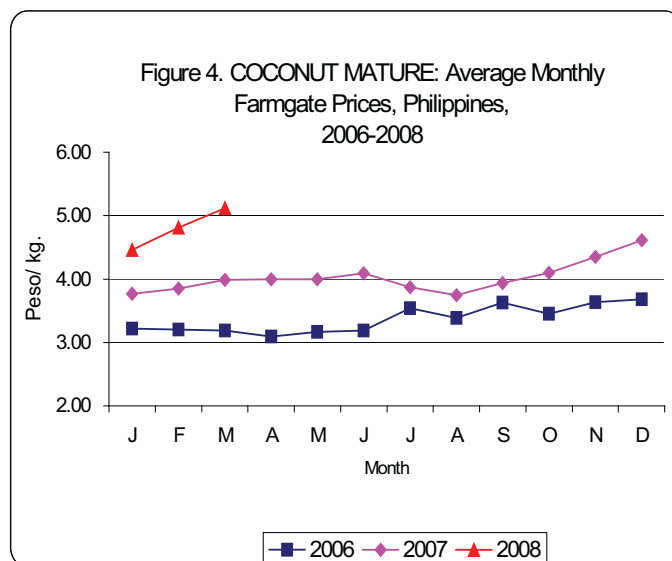
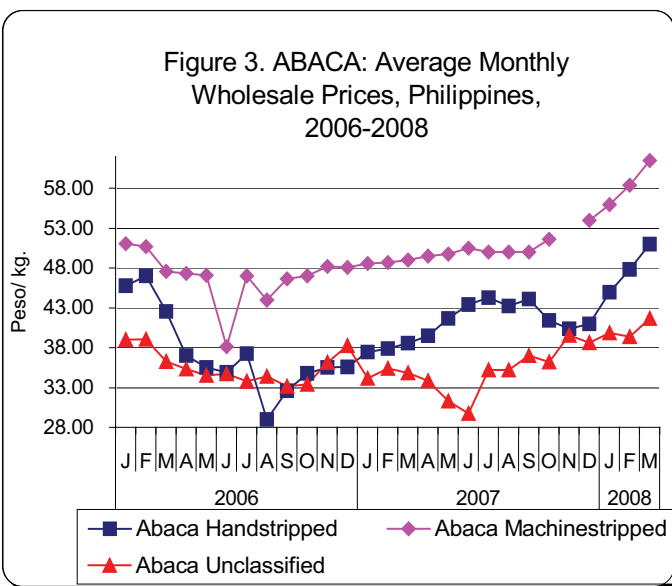
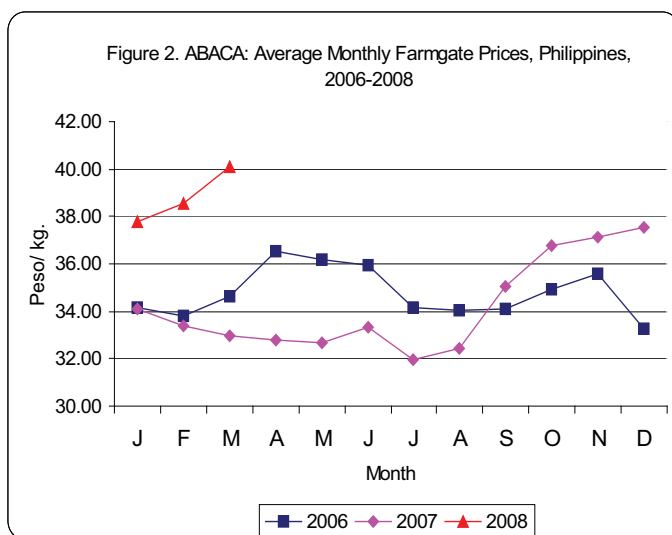
Average wholesale price of abaca, hand-stripped during the reference period was P47.93 per kilogram. This year's price was higher by P9.98 and P2.83 than the average prices in 2007 and 2006, respectively.

For *abaca, machine-stripped*, the January-March 2008 *wholesale price* averaged P58.63 per kilogram. This was P9.86 and P8.86 above the price levels in 2007 and 2006, respectively.

Wholesale price of unclassified abaca, likewise, increased from P34.78 per kilogram in 2007 to P40.31 in 2008.

Coconut mature

Average farmgate price of mature coconut from January to March 2008 was P4.80 per kilogram. Compared to 2007 and 2006, this year's average price of *mature coconut* was higher by P0.93 and P1.59, respectively.



Wholesale price of mature coconut, on the other hand, showed a decreasing trend. From the average price of P13.16 in January-March 2006, price dropped to P12.49 in 2007 then settled at P11.38 in 2008.

Retail price of mature coconut stood at P12.44 per kilogram. This was higher by P1.28 and P1.96 than the 2007 and 2006 average prices, respectively.

Coconut young

Farmgate price of coconut young (bucu) exhibited an upward trend in 2008. Price increased from P3.80 per kilogram in January to P5.67 in March. Average price stood at P4.56 in January to March 2008, up by P1.05 and P1.76 compared to 2007 and 2006 prices, respectively.

Copra resecada

At *farmgate*, price of *copra resecada* from January to March 2008 averaged P28.41 per kilogram. This was higher by P8.30 and P14.18 than the prices during the same period in 2007 and 2006, respectively.

Wholesale price of copra resecada likewise increased. The average price for the first quarter 2008 was P29.10 per kilogram, up by P7.54 and P14.58 compared to the prices in 2007 and 2006, respectively (Figure 8.).

Figure 5. COCONUT MATURE: Average Monthly Wholesale and Retail Prices, Philippines, 2006-2008

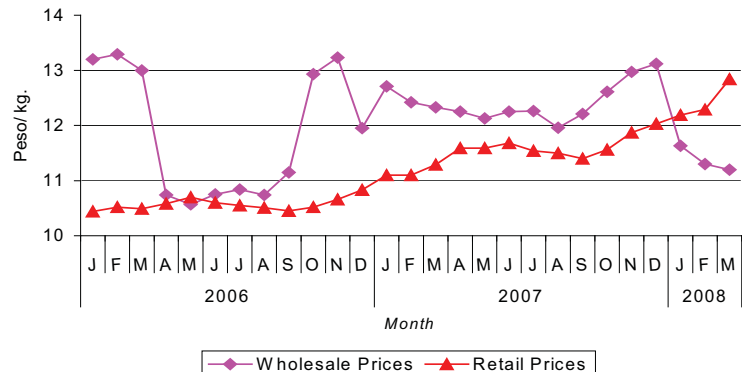


Figure 6. COCONUT YOUNG: Average Monthly Farmgate Prices, Philippines, 2006-2008

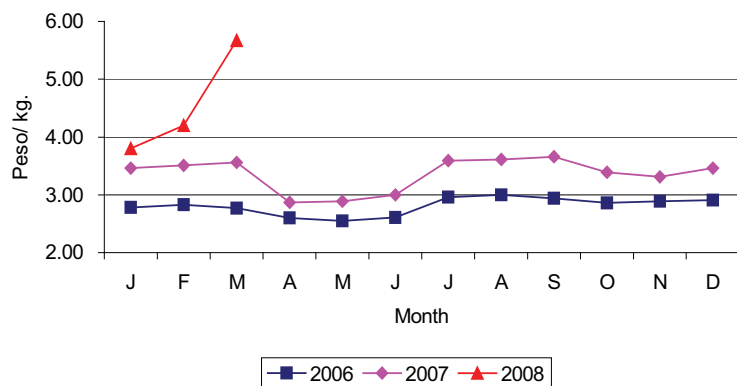
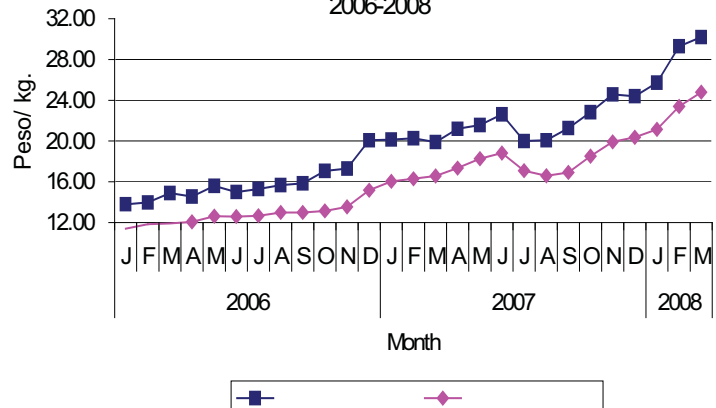


Figure 7. COPRA RESECADA & CORRIENTE: Average Monthly Farmgate Prices, Philippines, 2006-2008



Copra corriente

The January-March 2008 average farmgate price of copra corriente was P23.12 per kilogram. It posted increases of P6.81 and P11.40 compared to 2007 and 2006 average levels, respectively (Figure 7).

At wholesale, price of copra corriente averaged P21.13 per kilogram. This was P5.38 and P10.75 higher than the quotations in 2007 and 2006, respectively.

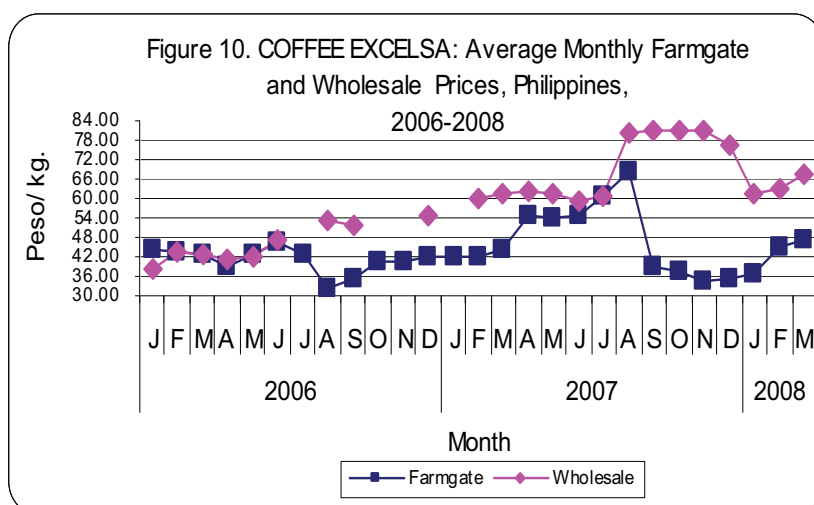
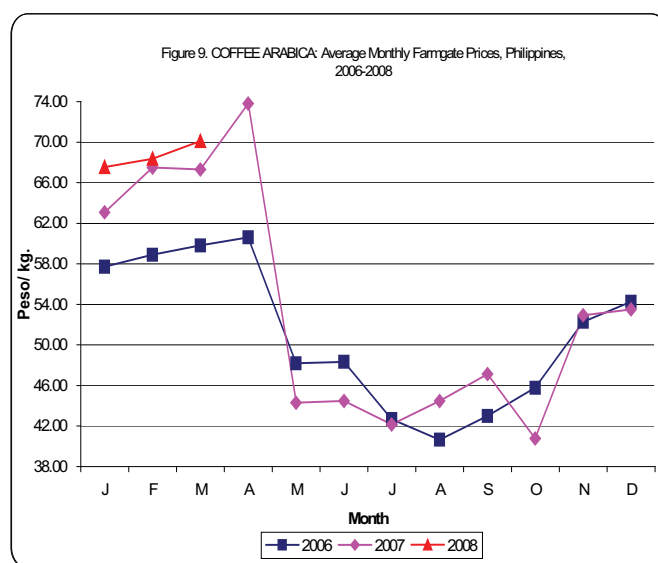
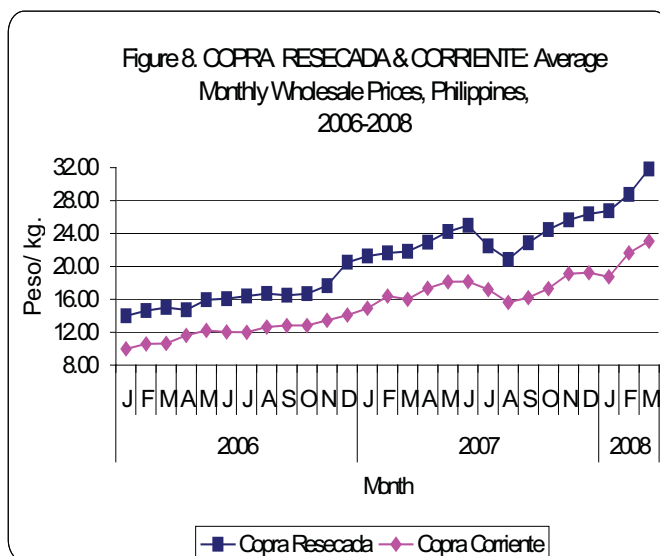
Coffee arabica

Average farmgate price of coffee arabica was P68.68 per kilogram in January-March 2008. This was P2.71 and P9.87 above the average prices in the same period of 2007 and 2006, respectively.

Coffee excelsa

Average farmgate price of coffee excelsa was P42.83 per kilogram during the first three months of 2008. This was P0.20 higher than the 2007 price but P0.55 lower than the 2006 price.

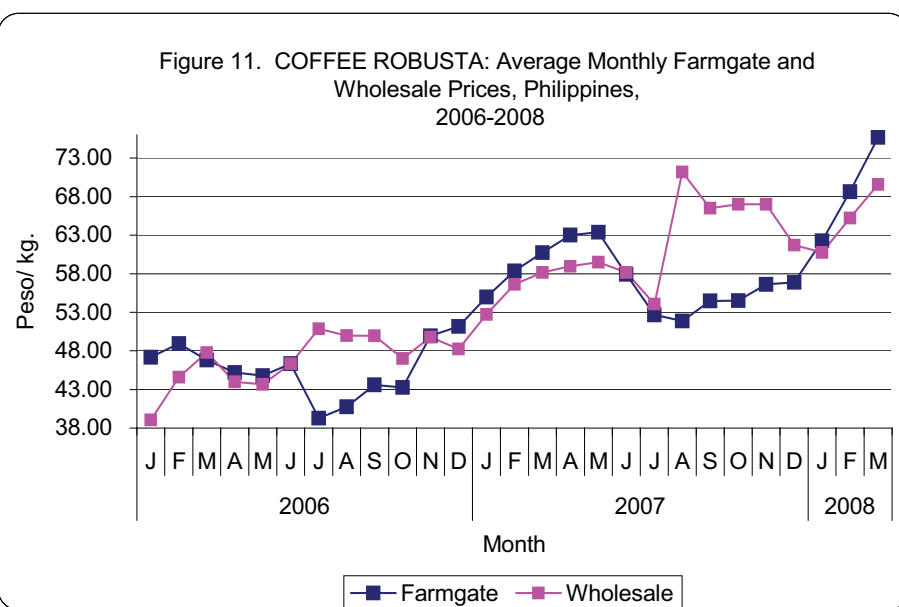
At wholesale, average price of coffee excelsa was P64.21 per kilogram from January to March 2008. This was P3.17 and P22.73 above the average prices in 2007 and 2006, respectively.



Coffee robusta

Farmgate

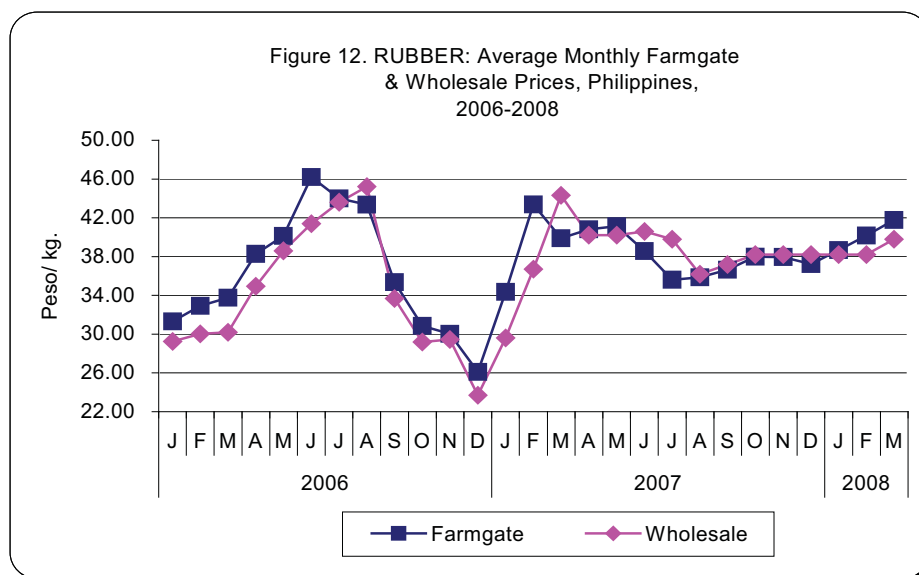
price of coffee robusta from January to March 2008 averaged P68.86 per kilogram. This was higher by P10.84 and P21.22 than the 2007 and 2006 prices, respectively. Monthly prices in 2008 exhibited an upward trend. From P62.28 per kilogram in January, price went up to P75.67 in March.



Wholesale price of coffee robusta likewise increased during the reference period. From the average price of P43.81 per kilogram in 2006, price rose to P65.19 in 2008.

Rubber

The January to March 2008 average farmgate price of rubber was P40.21 per kilogram. This price level was P0.99 and P7.55 higher than 2007 and 2006 average prices, respectively.



Wholesale

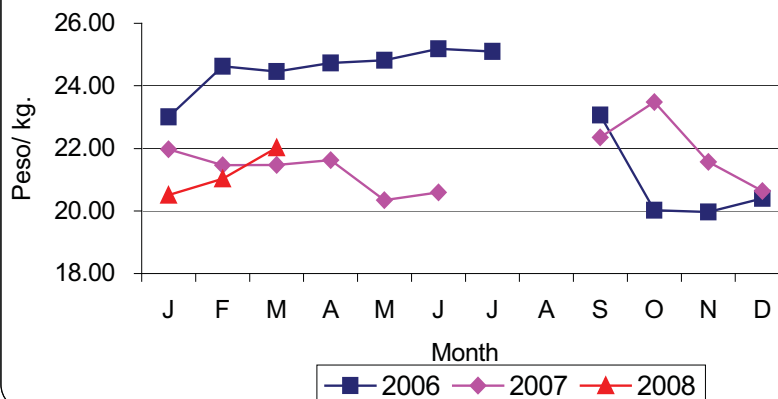
price of rubber averaged P38.73 per kilogram.

Compared to 2007 and 2006, the average price was higher by P1.86 and P8.90 than its corresponding prices in 2007 and 2006.

Raw Sugar

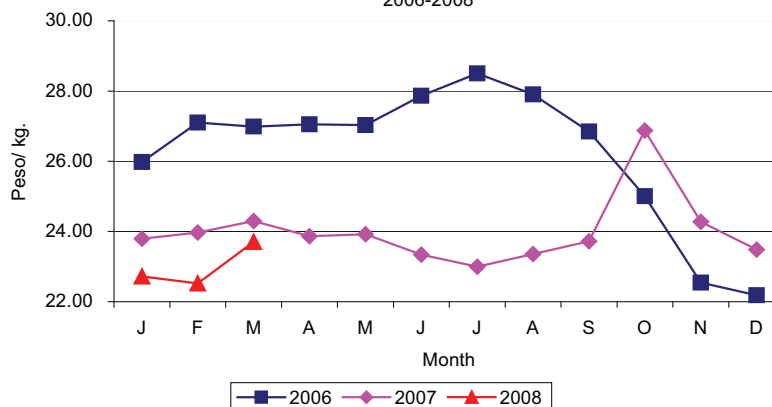
At millsite, price of raw sugar was increasing at the rate of 2.42 percent per month in January-March 2008. However, the quarter's average price per kilogram was lower than the prices in 2007 by P0.45 and in 2006 by P2.84.

Figure 13. RAW SUGAR : Average Monthly Millsite Prices, Philippines, 2006-2008



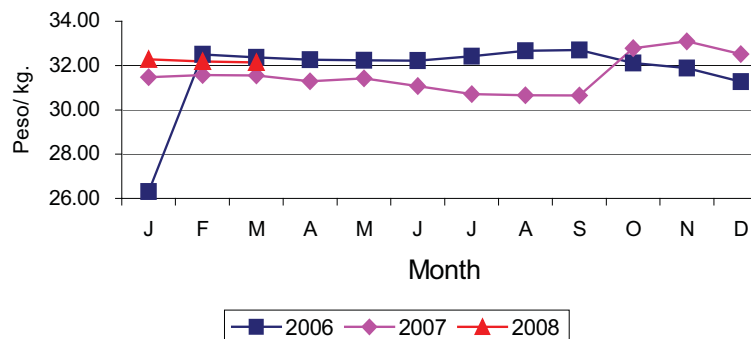
Wholesale price of raw sugar followed the same trend as in millsite. The average price of P22.98 per kilogram during the first quarter of 2008 was lower by P1.04 and P3.71 than 2007 and 2006 quotations, respectively.

Figure 14. RAW SUGAR : Average Monthly Wholesale Prices, Philippines, 2006-2008



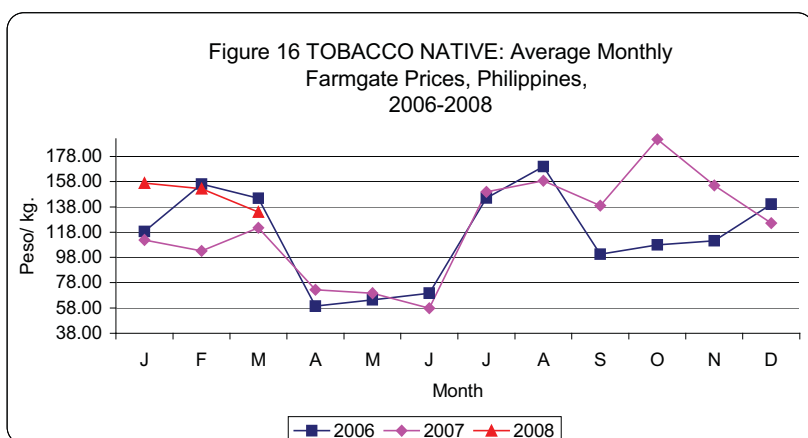
Retail price of brown sugar, on the other hand, was P32.20 per kilogram from January to March 2008. This was P0.67 and P1.81 higher than the 2007 and 2006 average prices.

Figure 15. BROWN SUGAR : Average Monthly Retail Prices, Philippines, 2006-2008



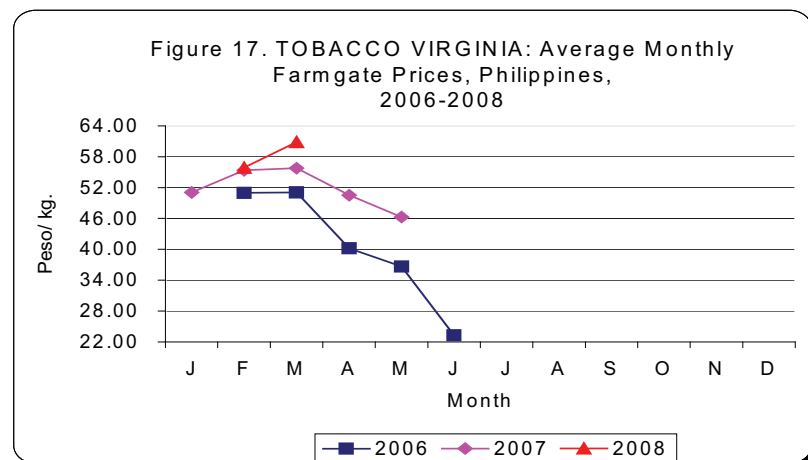
Native tobacco

Farmgate price of native tobacco averaged P147.73 per kilogram during the reference period. This was P35.55 and P7.84 above the average prices in 2007 and 2006, respectively.

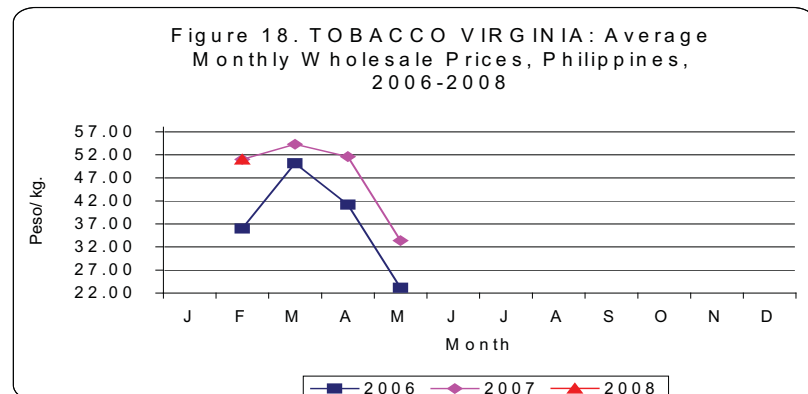


Virginia tobacco

At farmgate, average price of Virginia tobacco was P58.41 per kilogram from January to March 2008. This was P4.32 and P24.39 more than the quotations in 2007 and 2006, respectively.

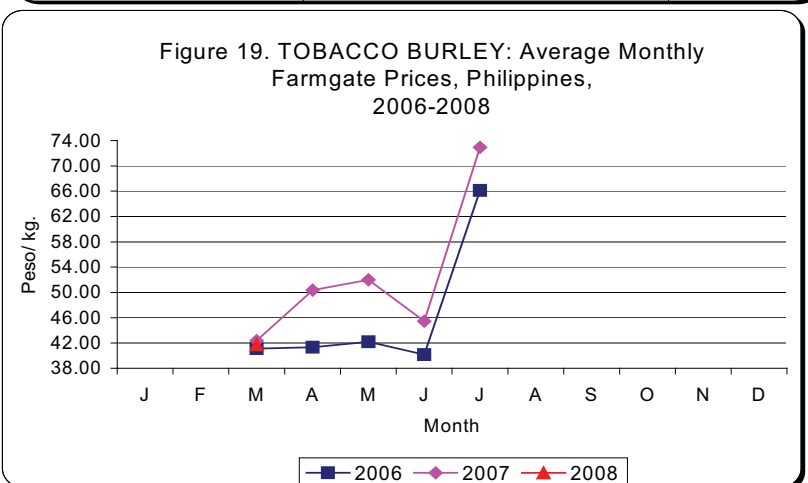


Wholesale price of Virginia tobacco stood at P51.00 per kilogram from January to March 2008. Compared to 2007, price was lower by P1.65 but compared to 2006 this was higher by P7.93.



Burley tobacco

The January-March 2008 farmgate price of Burley tobacco was P41.73 per kilogram. This was P0.63 lower than the average in 2007 but P0.62 higher than in 2006.



C. Trade

Export, January-February 2008

Table 1. Quantity and Value of Selected Agricultural Exports, Philippines, January-February, 2007-2008

[Quantity in MT, F.O.B. values in US\$]

| Commodity Description | 2007 | | 2008 | | Percent change | |
|------------------------|-----------|--------------|------------|--------------|----------------|--------------|
| | Quantity | F.O.B. Value | Quantity | F.O.B. Value | Quantity | F.O.B. Value |
| Abaca | 28.91 | 3,663,572 | 14.55 | 2,699,897 | (49.67) | (26.30) |
| Coconut | | 70,324,827 | | 219,696,566 | | 212.40 |
| Coconut, Desiccated | 20,788.92 | 21,709,812 | 17,721.86 | 23,093,095 | (14.75) | 6.37 |
| Coconuts, Fresh, Young | 127.27 | 31,790 | 139.11 | 45,222 | 9.31 | 42.25 |
| Virgin Coconut Oil | 101.64 | 360,363 | 171.32 | 493,078 | 68.55 | 36.83 |
| Coconut oil | 72,725.26 | 46,534,005 | 181,501.46 | 195,312,112 | 149.57 | 319.72 |
| Flour, Meal and Powder | 160.84 | 112,419 | 149.78 | 165,891 | (6.88) | 47.56 |
| Coconut milk | 806.79 | 1,576,438 | 368.08 | 587,168 | (54.38) | (62.75) |
| Coffee | 0.55 | 1,366 | 16.80 | 31,248 | 2,960.11 | 2,187.55 |
| Rubber | 10,203.32 | 5,332,318 | 4,844.44 | 6,994,807 | (52.52) | 31.18 |
| Sugar | | 8,782,174 | | 13,722,320 | | 56.25 |
| Muscovado | 164.20 | 431,337 | 268.93 | 353,434 | 63.78 | (18.06) |
| Centrifugal Sugar | 2.52 | 8,346,734 | 43,206.39 | 12,697,764 | 1,715,800.91 | 52.13 |
| Panocha | 3.22 | 3,450 | 2.72 | 4,322 | (15.62) | 25.28 |
| Cane Molasses | 0.06 | 653 | 7,643.69 | 666,800 | 13,897,521.82 | 102,013.32 |
| Tobacco | | 2,331,954 | | 401,160 | | (82.80) |
| Virginia Type | 598.19 | 1,067,165 | 69.12 | 103,680 | (88.45) | (90.28) |
| Oriental Type | 134.64 | 232,452 | - | - | | |
| Burley Type | 361.77 | 1,032,337 | 155.40 | 297,480 | (57.04) | (71.18) |

In 2008, the *volume* of *abaca* exports was estimated at 14.55 MT *valued* at US\$2,699,897. This was lower than the 28.91 MT of exports in 2007 valued at US\$3,663,572.

Exports of *coconut* products increased in 2008. *Volume* of *coconut oil* of various grades expanded by 149.57%; *Virgin Coconut Oil*, 68.55%; and *young coconut* by 9.31%. Likewise, the *value* of exported *coconut oil* of various grades increased by 319.72%; *young coconut*, 42.25%; and *Virgin Coconut Oil*, 36.83%. On the other hand, *volume* of exported *coconut milk* of various forms, *desiccated coconut*; and *flour, meal and powder* of *coconut* dropped by 54.38%, 14.75%, 6.88%, respectively.

Volume of *coffee* exports increased from 0.55 MT in 2007 to 16.80 MT in 2008. *Value* of exports also increased from US\$1,366 to US\$31,248.

Volume of exported natural *rubber* reached 4,844.44 MT in 2008. This was 52.52% lower than last year's 10,203.32 MT. However, *value* of *rubber* exports went up to US\$6,994,807 in 2008 from US\$5,332,318 in 2007.

Exports of *sugarcane* product increased in 2008. This was contributed by *centrifugal sugar*, 43,206.39 MT; *cane molasses*, 7,643.69 MT; *muscovado*, 268.93 MT and *panocha* by 2.72 MT. *Total value* of exported *sugarcane products* also went up by 56.25%, from US\$8,782,174 in 2007 to US\$13,722,320 in 2008.

In 2008, *tobacco* exports dropped. Exports of *Virginia tobacco* at 69.12 MT went down from 598.19 MT in 2007; and *Burley*, 155.40 MT from 361.77 MT in 2007. *Total value* of *tobacco* exports dropped by 82.80% to US\$401,160 in 2008 from US\$1,094.60 in 2007.

Imports, January 2008

Table 2. Quantity and Value of Selected Agricultural Imports, Philippines, January 2007-2008
[Quantity in MT, C.I.F. values in US\$]

| Commodity Description | 2007 | | 2008 | | Percent change | |
|-----------------------|----------|--------------|----------|--------------|----------------|--------------|
| | Quantity | C.I.F. Value | Quantity | C.I.F. Value | Quantity | C.I.F. Value |
| Coffee | 1,437.88 | 1,936,926 | 533.82 | 998,143 | -62.87 | -48.47 |
| Rubber | 449.79 | 817,469 | 572.54 | 1,536,234 | 27.29 | 87.93 |
| Tobacco | | 21,348,468 | | 8,919,637 | -47.41 | -58.22 |
| Virginia | 4,874.78 | 14,752,522 | 2,869.63 | 6,669,487 | -41.13 | -54.79 |
| Oriental | 571.56 | 1,048,543 | 545.38 | 945,154 | -4.58 | -9.86 |
| Burley | 1,698.30 | 5,547,403 | 342.30 | 1,304,996 | -79.84 | -76.48 |

Importation of *coffee* products in 2008 was recorded at 533.82 MT valued at US\$998,143. This was lower compared to the 1,437.88 MT valued at US\$1,936,926 in 2007. On the other hand, rubber exports of various forms increased from 449.79 MT in 2007 to 572.54 MT in 2008 while value expanded from US\$817,469 to US\$1,536,234.

Imports of *tobacco* products exhibited a downward trend in 2008. The volume of imported *Burley tobacco* decreased by 79.84%, from 1,698.30 MT in 2007 to 342.30 MT in 2008. Imports of *Virginia tobacco* decreased from 4,874.78 MT in 2007 to 2,869.63 MT in 2008, and that of *Oriental tobacco* from 571.56 MT to 545.38 MT. *Total values* of imported tobacco were reduced as follows: Burley, 76.48%; Virginia, 54.79%; and Oriental by 9.86%.

Table 3. Production of Major Non-Food and Industrial Crops (MT),
Philippines, January-March 2006-2008

| Crop | January-March | | | Percent change | |
|-----------------------|---------------|------------|------------|----------------|-----------|
| | 2006 | 2007 | 2008P | 2008/2006 | 2008/2007 |
| Abaca | 18,016 | 16,645 | 16,427 | (8.82) | (1.31) |
| Coconut | 3,547,558 | 3,365,855 | 3,537,440 | (0.29) | 5.10 |
| Mature | 3,469,911 | 3,298,299 | 3,464,571 | (0.15) | 5.04 |
| Young | 77,648 | 67,556 | 72,869 | (6.15) | 7.86 |
| Coffee | 34,652 | 33,305 | 33,540 | (3.21) | 0.70 |
| Arabica | 5,285 | 5,179 | 5,208 | (1.45) | 0.57 |
| Excelsa | 2,621 | 2,313 | 2,292 | (12.54) | (0.93) |
| Liberica | 254 | 178 | 176 | (30.79) | (1.60) |
| Robusta | 26,299 | 25,437 | 25,666 | (2.41) | 0.90 |
| Others | 194 | 198 | 198 | 2.30 | (0.08) |
| Rubber | 59,740 | 61,205 | 65,112 | 8.99 | 6.38 |
| Sugarcane | 11,978,789 | 11,109,674 | 11,806,677 | (1.44) | 6.27 |
| Centrifugal | 11,869,615 | 11,004,758 | 11,707,658 | (1.36) | 6.39 |
| Panocha/ Muscovado | 106,561 | 102,155 | 95,874 | (10.03) | (6.15) |
| Chewing | 351 | 349 | 527 | 50.21 | 51.19 |
| Basi/Vinegar | 2,261 | 2,412 | 2,618 | 15.77 | 8.57 |
| Tobacco | 11,662 | 13,741 | 9,519 | (18.38) | (30.72) |
| Native | 265 | 254 | 238 | (10.08) | (6.45) |
| Virginia | 11,234 | 13,288 | 9,082 | (19.16) | (31.65) |
| Others | 163 | 199 | 200 | 22.26 | 0.33 |

Table 4. Area (ha) of Major Non-Food and Industrial Crops, by Region, Philippines, 2007

| REGION/PROVINCE | *Abaca | *Coconut | *Coffee | *Rubber | **Sugarcane | **Tobacco |
|---------------------|---------|-----------|---------|---------|-------------|-----------|
| PHILIPPINES | 136,049 | 3,359,777 | 123,975 | 110,972 | 382,956 | 23,863 |
| CAR | 600 | 280 | 7,581 | - | 151 | 2,048 |
| Ilocos Region | - | 11,406 | 107 | - | 437 | 15,619 |
| Cagayan Valley | - | 13,618 | 2,863 | - | 7,489 | 4,874 |
| Central Luzon | 480 | 24,105 | 1,867 | - | 16,361 | 200 |
| CALABARZON | 199 | 343,541 | 14,780 | 227 | 30,941 | - |
| MIMAROPA | 1,122 | 160,405 | 942 | 50 | - | 168 |
| Bicol Region | 42,663 | 442,406 | 867 | - | 6,640 | 16 |
| Western Visayas | 4,020 | 122,573 | 10,087 | - | 192,352 | 178 |
| Central Visayas | 3,087 | 128,646 | 1,412 | 14 | 41,283 | 131 |
| Eastern Visayas | 45,068 | 372,497 | 411 | - | 8,408 | 52 |
| Zamboanga Peninsula | 1,885 | 363,624 | 1,444 | 42,133 | 125 | 41 |
| Northern Mindanao | 4,993 | 298,985 | 13,218 | 4,535 | 53,230 | 400 |
| Davao Region | 10,120 | 376,398 | 26,677 | 6,196 | 13,616 | 17 |
| SOCCSKSARGEN | 4,018 | 167,985 | 23,930 | 31,078 | 10,755 | 50 |
| Caraga | 9,891 | 218,932 | 4,061 | 5,546 | 3 | 20 |
| ARMM | 7,902 | 314,376 | 13,728 | 21,193 | 1,164 | 50 |

* *area planted*

** *area harvested*

Table 5. Number of Bearing Trees of Major Non-Food and Industrial Crops, by Region, Philippines, 2007

| REGION/PROVINCE | Coconut | Coffee | Rubber |
|---------------------|-------------|------------|------------|
| PHILIPPINES | 338,724,352 | 86,214,597 | 35,030,731 |
| CAR | 33,269 | 4,779,615 | - |
| Ilocos Region | 891,677 | 62,424 | - |
| Cagayan Valley | 1,366,567 | 1,847,203 | - |
| Central Luzon | 2,358,895 | 1,311,074 | - |
| CALABARZON | 41,714,661 | 10,702,962 | 50,650 |
| MIMAROPA | 17,142,289 | 351,129 | 31,500 |
| Bicol Region | 34,452,018 | 610,465 | - |
| Western Visayas | 9,578,206 | 6,061,738 | - |
| Central Visayas | 12,558,177 | 1,057,192 | - |
| Eastern Visayas | 48,061,093 | 210,569 | - |
| Zamboanga Peninsula | 30,344,292 | 826,846 | 16,070,604 |
| Northern Mindanao | 31,813,502 | 6,844,312 | 411,326 |
| Davao Region | 39,923,065 | 21,882,670 | 1,284,946 |
| SOCCKSARGEN | 14,399,330 | 18,331,987 | 12,432,240 |
| Caraga | 20,839,900 | 2,586,500 | 2,466,415 |
| ARMM | 33,247,411 | 8,747,911 | 2,283,050 |

Department of Agriculture
Bureau of Agricultural Statistics
1184 Ben-lor Bldg., Quezon Avenue, Quezon City
Crops Statistics Division
371-2067
infobas@mozcom.com

<http://www.bas.gov.ph>