



NSO

National Statistics Office, Republic of the Philippines



*Providing Statistics  
for a Globally Competitive Economy*

# **2006 Census of Philippine Business and Industry**

## **ECONOMY-WIDE**

**Preliminary Results for ATE of 20 and Over**

---

# Ang Tanong!!!!

Which sectors are the...

- Top 5 employers?
- Top 5 revenue generators?
- Top 5 labor productive sectors?

# Outline of Presentation

- **Selected statistics/indicators by broad industry group**
- **Selected statistics/indicators by sector**



NSO

National Statistics Office, Republic of the Philippines

# Selected Indicators by Broad Industry Group



2006 Census of Philippine Business and Industry Data Dissemination

# Broad Industry Groupings

## **Agriculture:**

**A - Agriculture, Hunting and Forestry**

**B - Fishing**

## **Industry:**

**C - Mining and Quarrying**

**D - Manufacturing**

**E - Electricity, Gas and Water**

**F - Construction**

# Broad Industry Groupings

## Services:

**G - Wholesale and Retail Trade**

**H - Hotels and Restaurants**

**I - Transport, Storage and Communications**

**J - Financial Intermediation**

# Broad Industry Groupings

## Services: - *cont*

**K - Real Estate, Renting and Business Activities**

**M - Private Education**

**N - Health and Social Work**

**O - Other Community, Social and Personal  
Service Activities**



# Number and Percentage Distribution of Establishments with ATE of 20 and Over by Broad Industry Group: 2005 and 2006

Broad Industry Group	2005		2006	
	Number	%	Number	%
<b>Philippines</b>	<b>26,407</b>		<b>21,217</b>	
<b>Agriculture</b>	<b>830</b>	<b>3.1</b>	<b>889</b>	<b>4.3</b>
<b>Industry</b>	<b>7,708</b>	<b>29.2</b>	<b>6,142</b>	<b>28.9</b>
<b>Services</b>	<b>17,869</b>	<b>67.7</b>	<b>14,176</b>	<b>66.8</b>

# Employment

**"The number of persons who worked in or for the establishment as of November 15, 2006"**

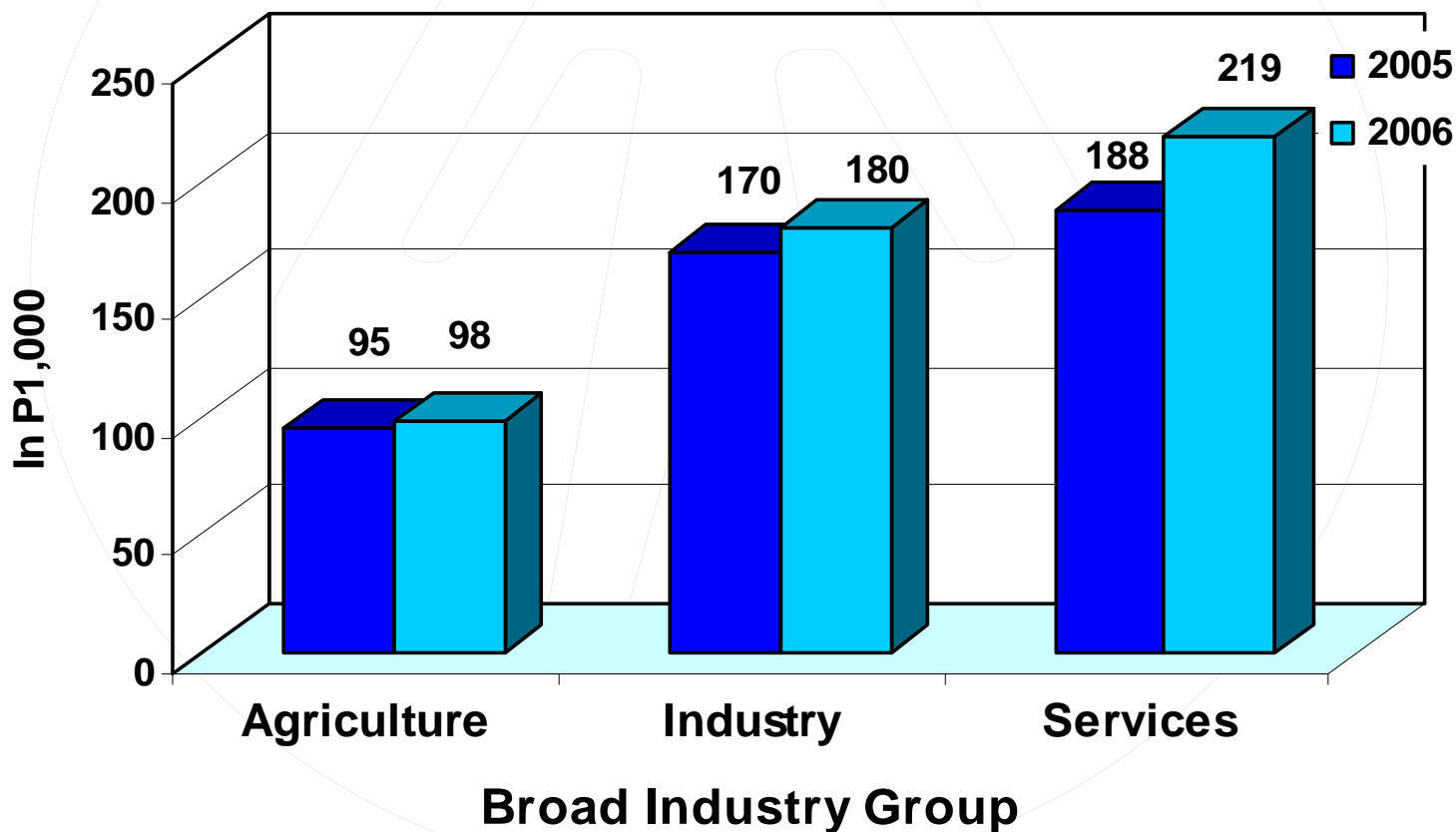
# Number and Percentage Distribution of Employees for Establishments with ATE of 20 and Over by Broad Industry Group: 2005 and 2006

Broad Industry Group	2005		2006	
	Number	%	Number	%
<b>Philippines</b>	<b>2,741,292</b>		<b>2,631,889</b>	
<b>Agriculture</b>	<b>124,985</b>	<b>4.6</b>	<b>137,689</b>	<b>5.2</b>
<b>Industry</b>	<b>1,194,300</b>	<b>43.6</b>	<b>1,152,073</b>	<b>43.8</b>
<b>Services</b>	<b>1,422,007</b>	<b>51.8</b>	<b>1,342,127</b>	<b>51.0</b>

# Compensation

**"Payments made for services rendered. Includes salaries and wages and employer's contribution to SSS / GSIS, etc."**

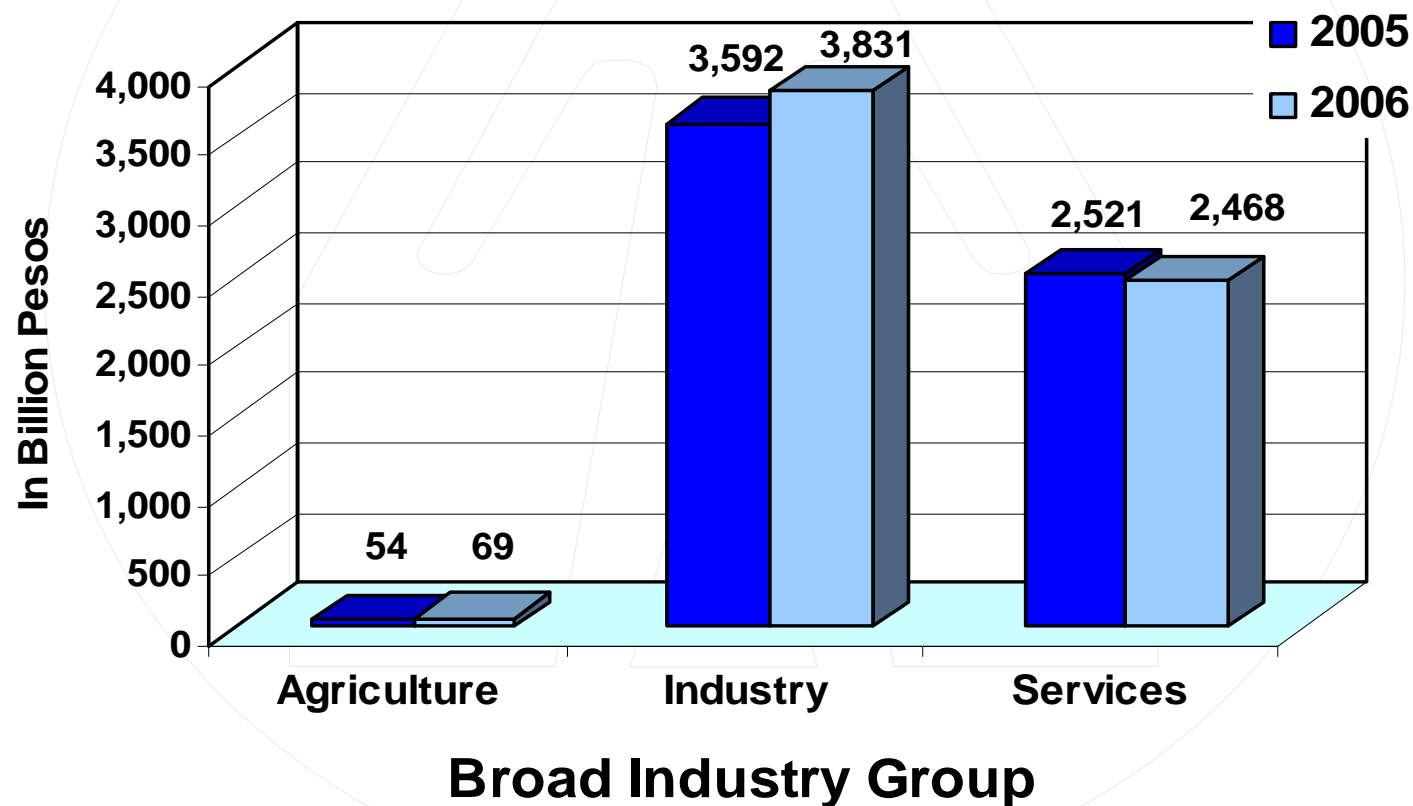
# Average Annual Compensation of Employees of Establishments with ATE of 20 and Over by Broad Industry Group: 2006



# Revenue

**"The value of goods, products/by-products sold and/or services rendered to others whether paid in cash or is considered receivable by the establishment"**

# Revenue of Establishments with ATE of 20 and Over by Broad Industry Group: 2005 and 2006

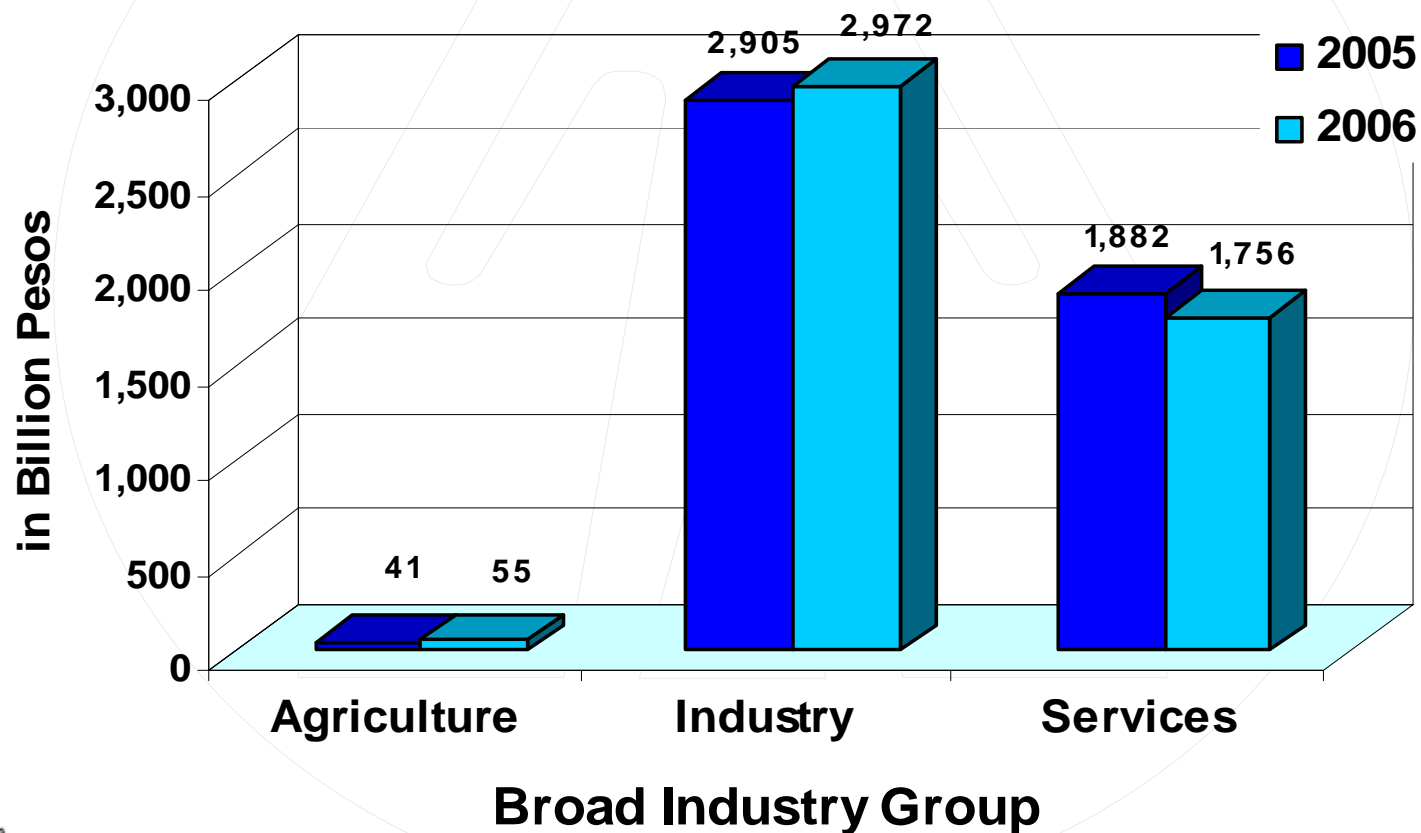


# Cost

**“Refers to all expenses incurred during the year whether paid or payable”**



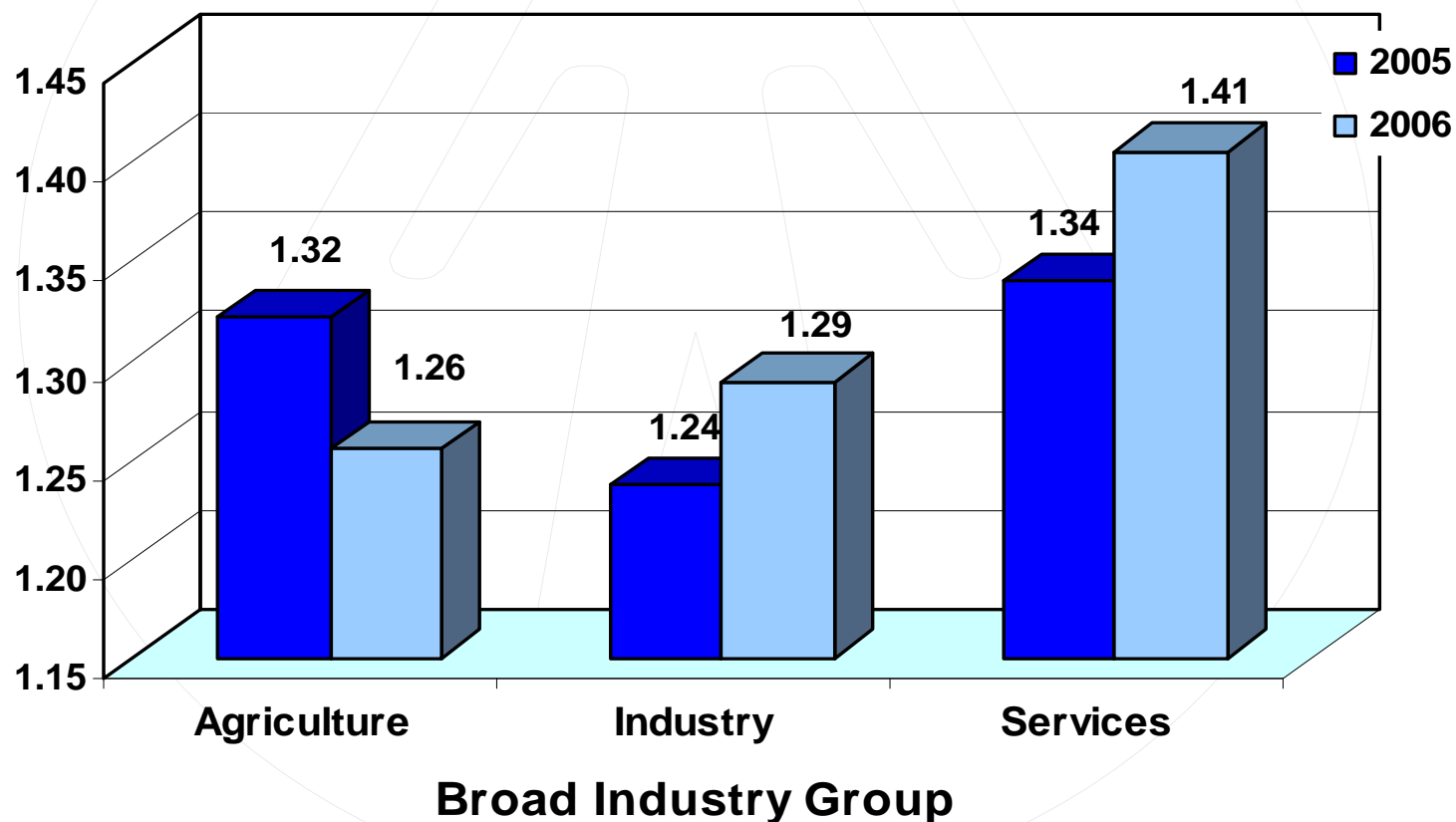
# Cost of Establishments with ATE of 20 and Over by Broad Industry Group: 2005 and 2006



# Revenue-Cost Ratio

**“Refers to amount of return per  
Peso cost”**

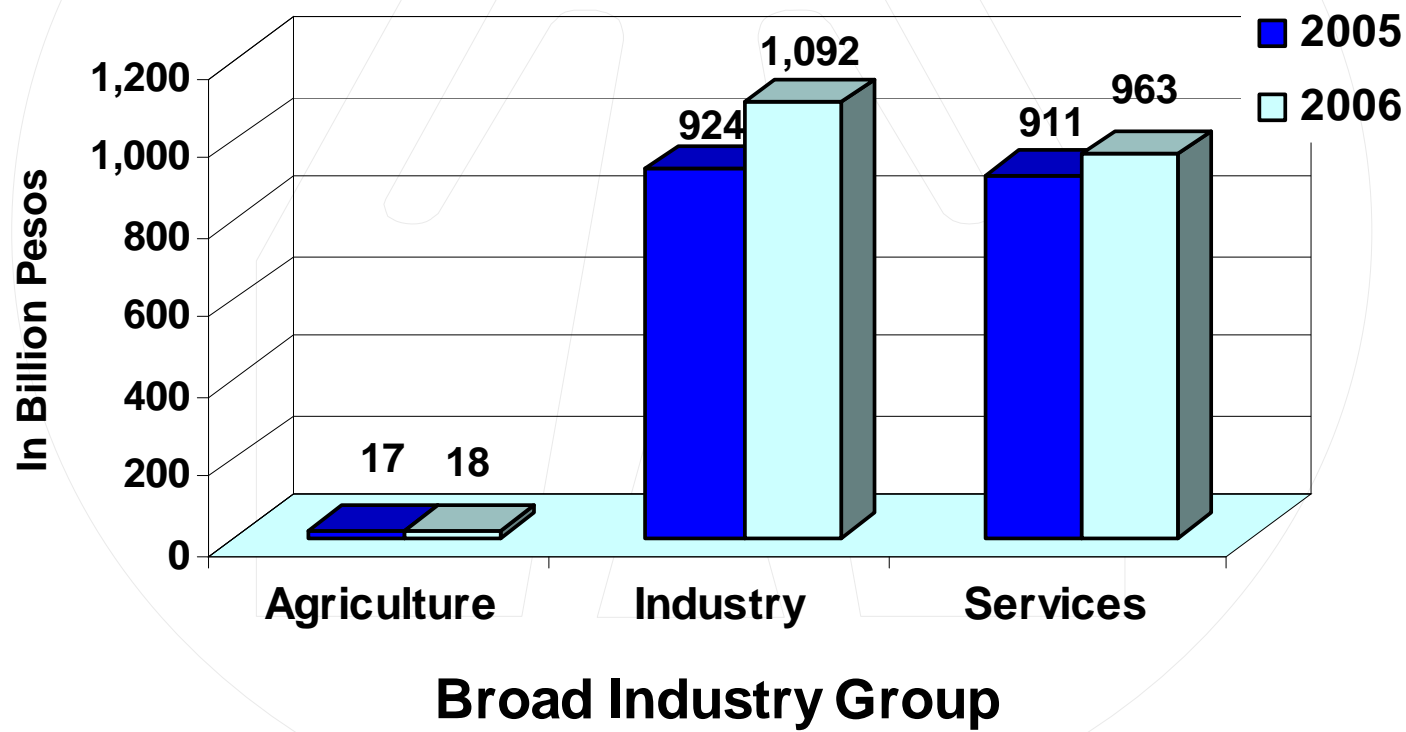
# Revenue-Cost Ratio of Establishments with ATE of 20 and Over by Broad Industry Group: 2005 and 2006



# Value Added

**"Gross output less intermediate input."**

# Value Added for Establishments with ATE of 20 and Over by Broad Industry Group: 2005 and 2006



# Summary Statistics for Establishments with ATE of 20 and Over by Broad Industry Group: 2006

Broad Industry Group	% to Total			Value Added (in billion Pesos)
	Establishments	Employment	Revenue	
<b>Philippines</b>	<b>100</b>	<b>100</b>	<b>100</b>	<b>2,074</b>
<b>Agriculture</b>	<b>4.3</b>	<b>5.2</b>	<b>1.1</b>	<b>18</b>
<b>Industry</b>	<b>28.9</b>	<b>43.8</b>	<b>60.2</b>	<b>1,092</b>
<b>Services</b>	<b>66.8</b>	<b>51.0</b>	<b>38.7</b>	<b>963</b>



NSO

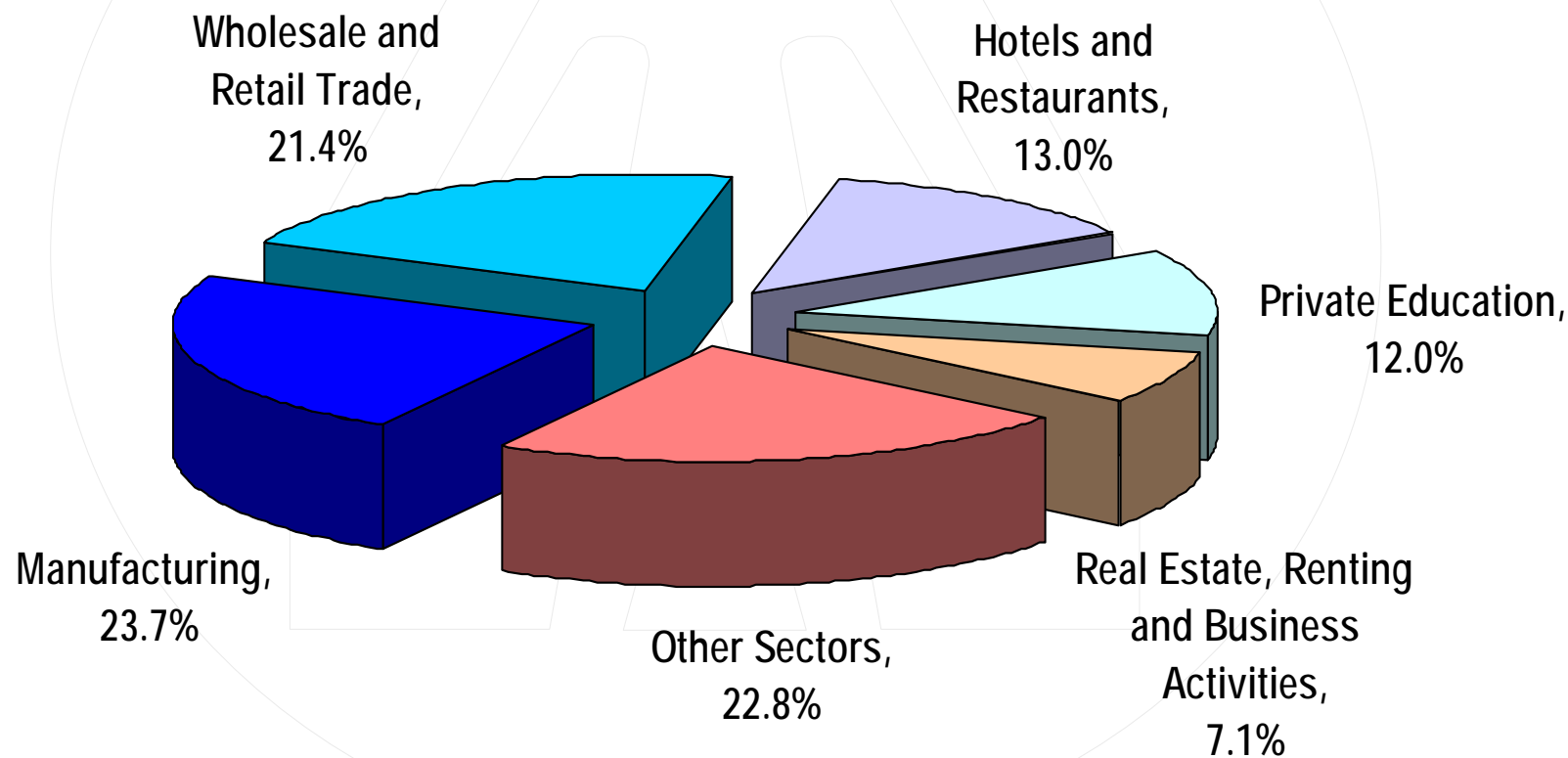
National Statistics Office, Republic of the Philippines

# Selected Statistics for Establishments with ATE of 20 and Over by Sector: 2006



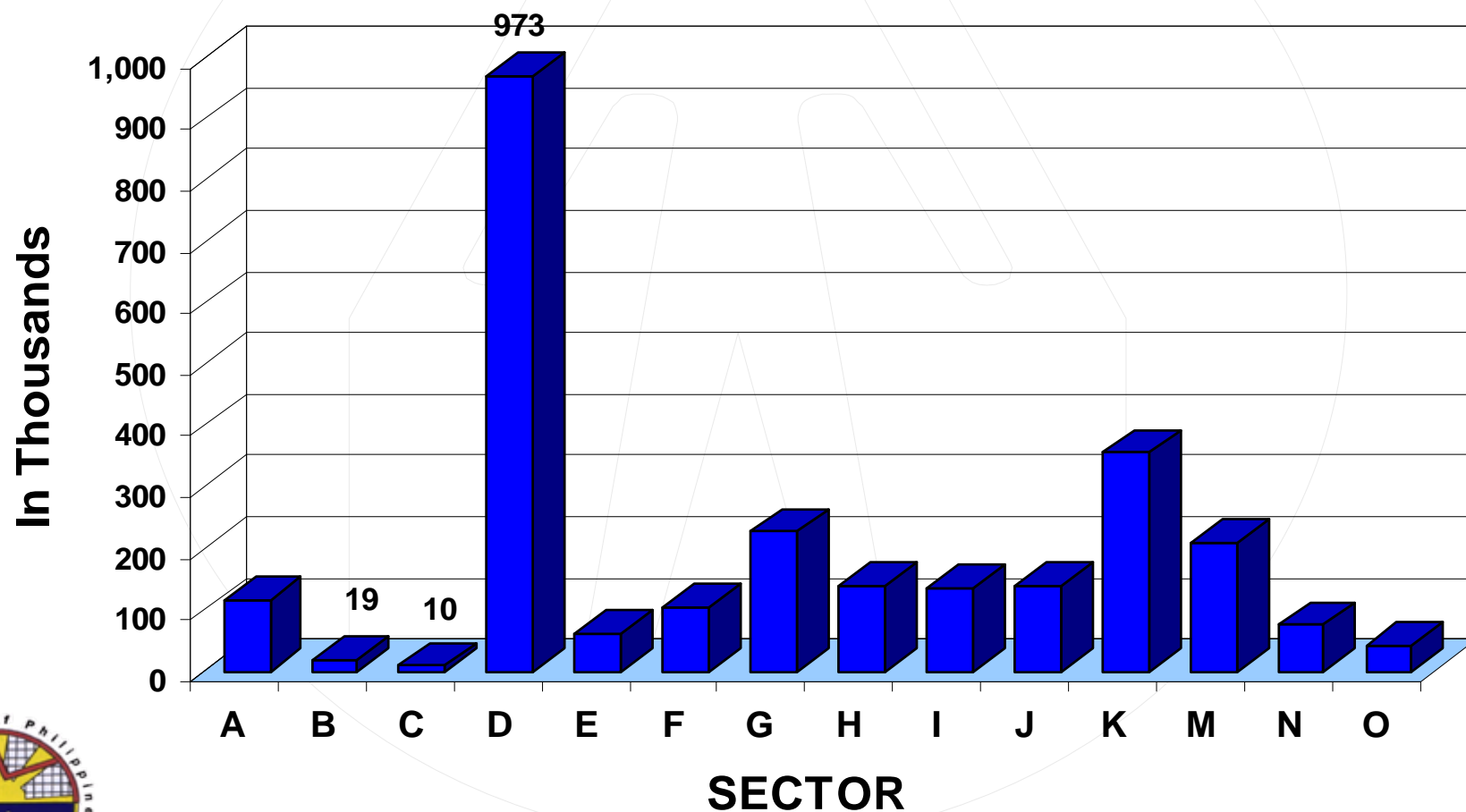
2006 Census of Philippine Business and Industry Data Dissemination

# Percentage Distribution of Establishments with ATE of 20 and Over by Sector: 2006

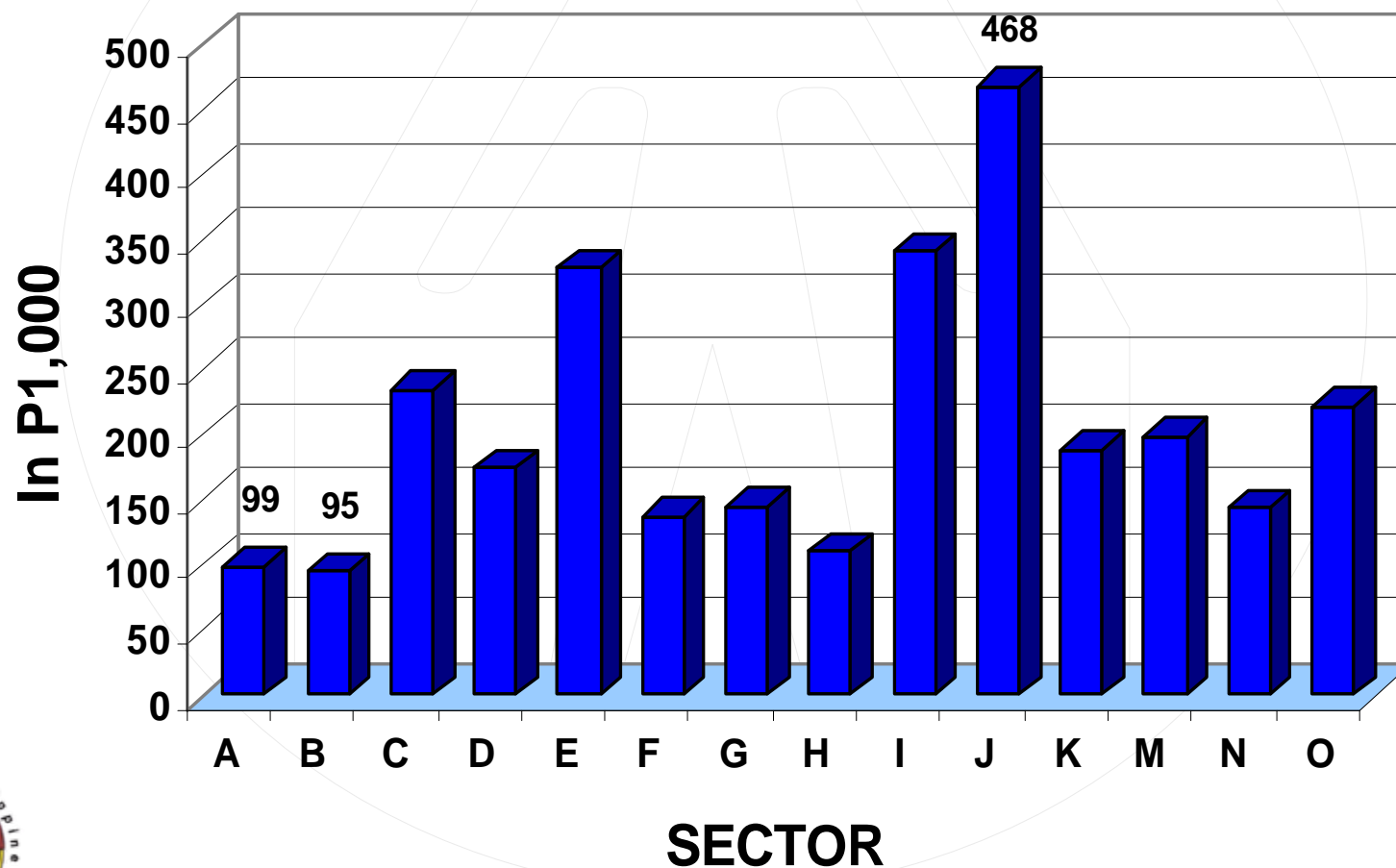




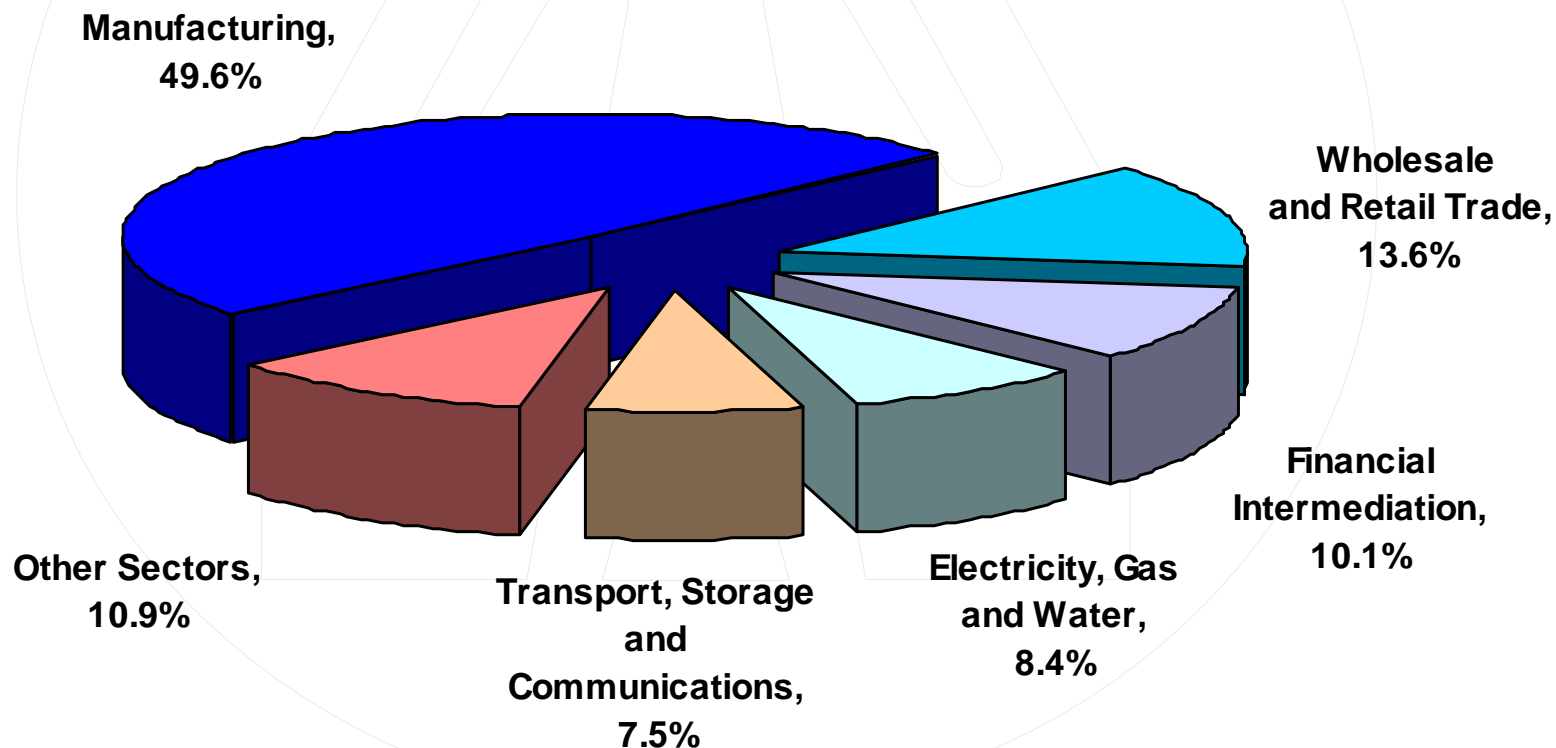
# Total Employment for Establishments with ATE of 20 and Over by Sector: 2006



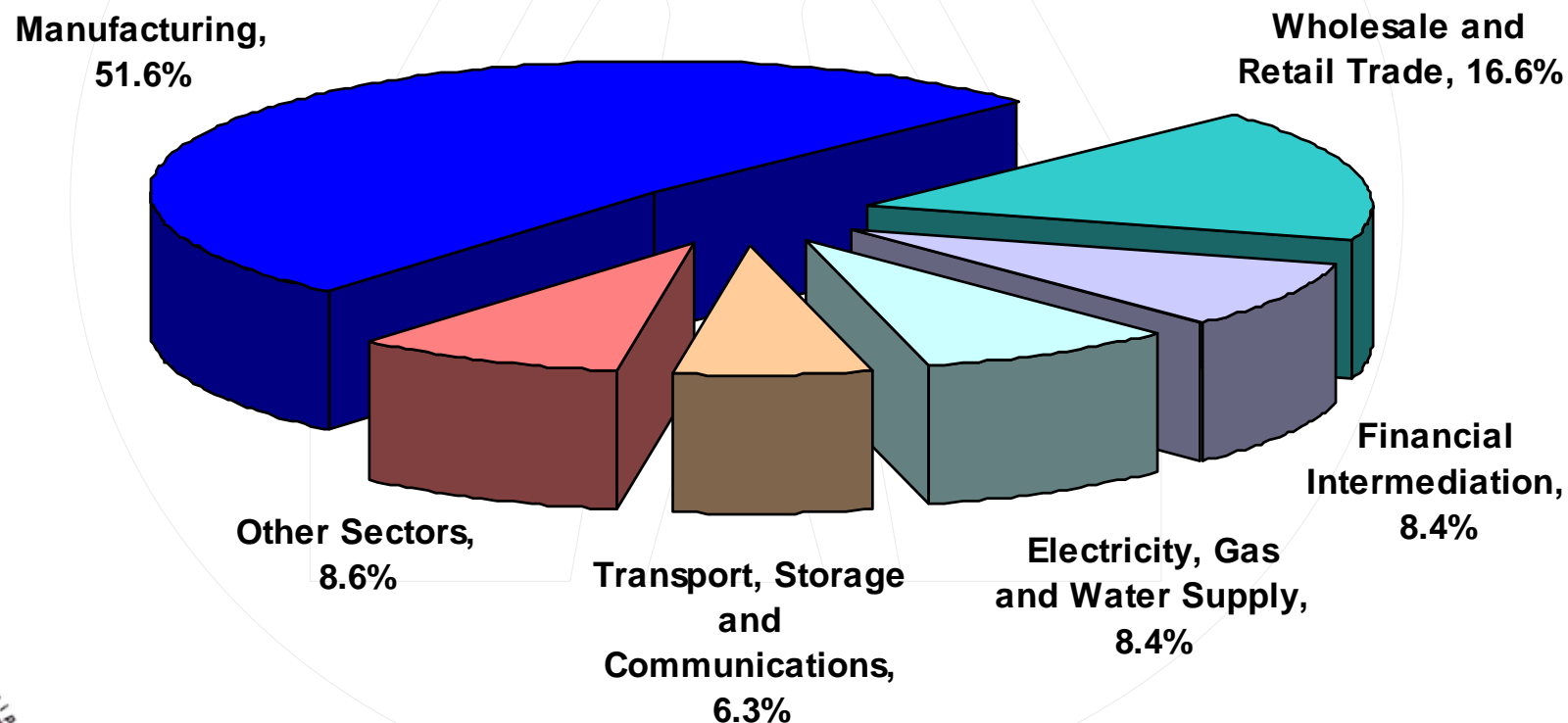
# Average Annual Compensation for Establishments with ATE of 20 and Over by Sector: 2006



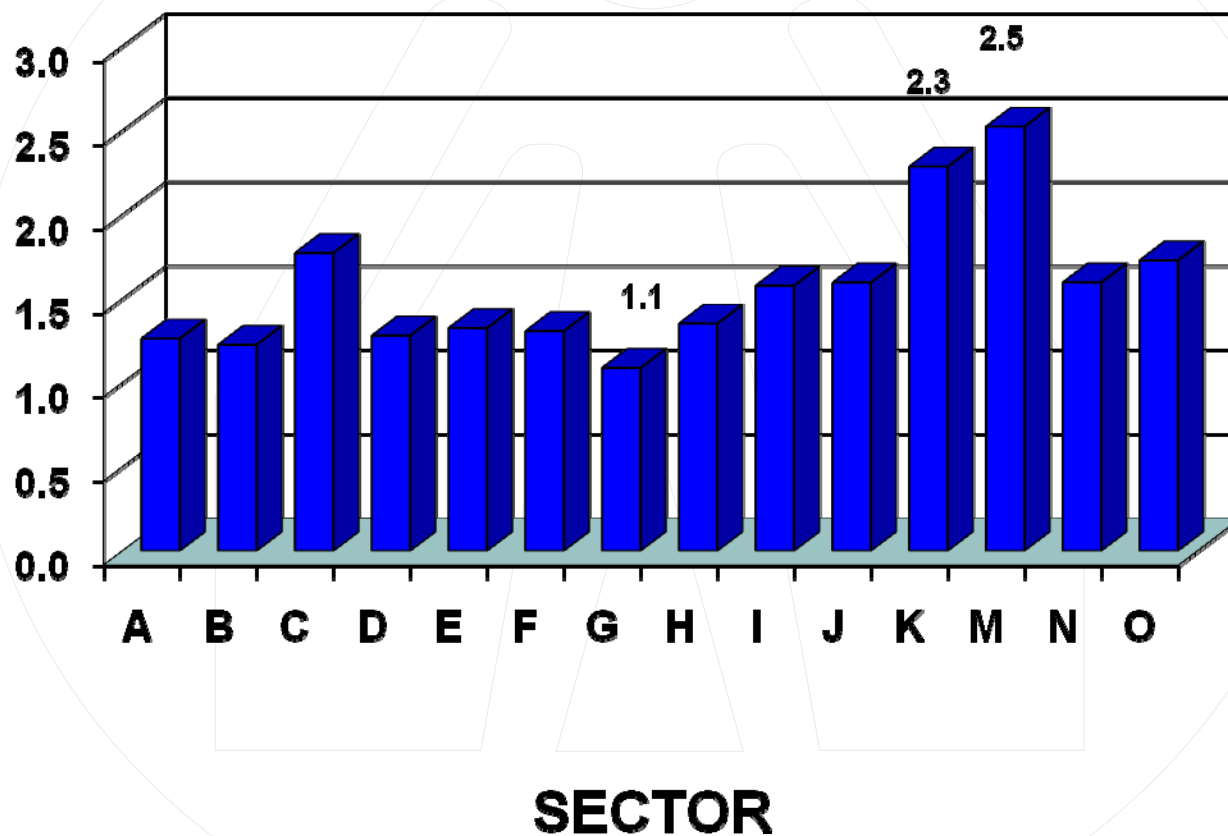
# Percentage Distribution of Revenue for Establishments with ATE of 20 and Over by Sector: 2006



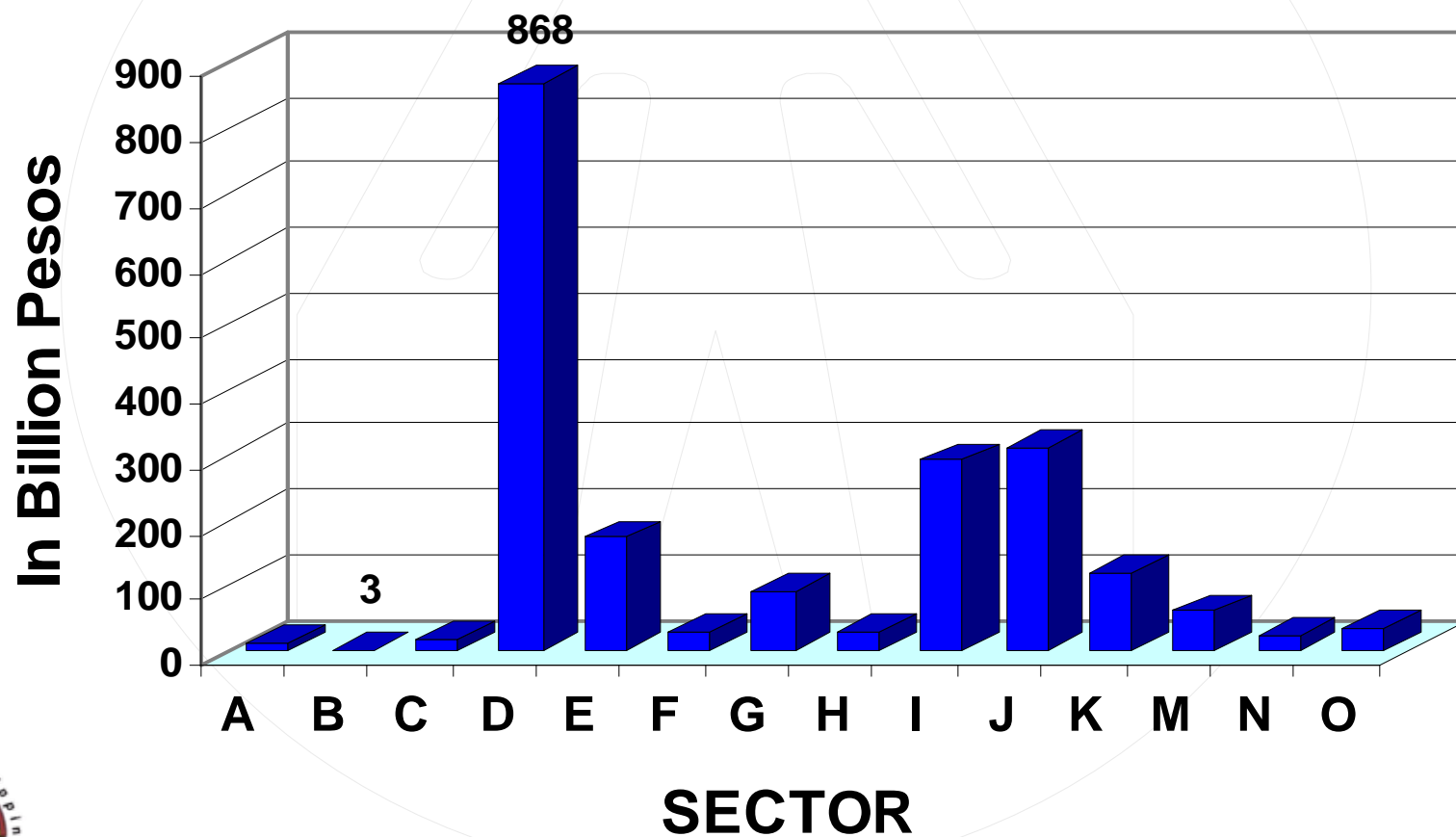
# Percentage Distribution of Cost for Establishments with ATE of 20 and Over by Sector: 2006



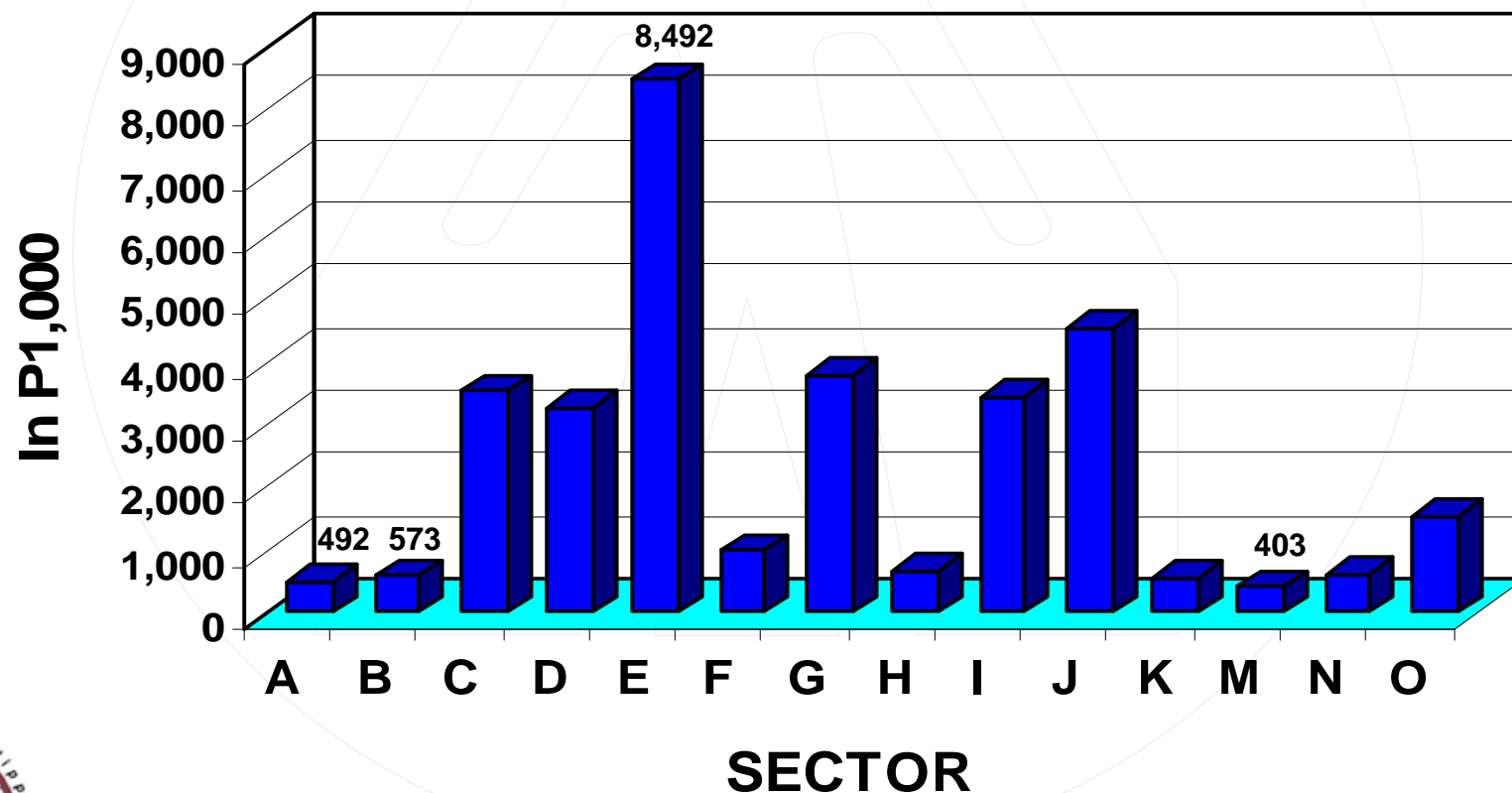
# Revenue-Cost Ratio of Establishments with ATE of 20 and Over by Sector: 2006



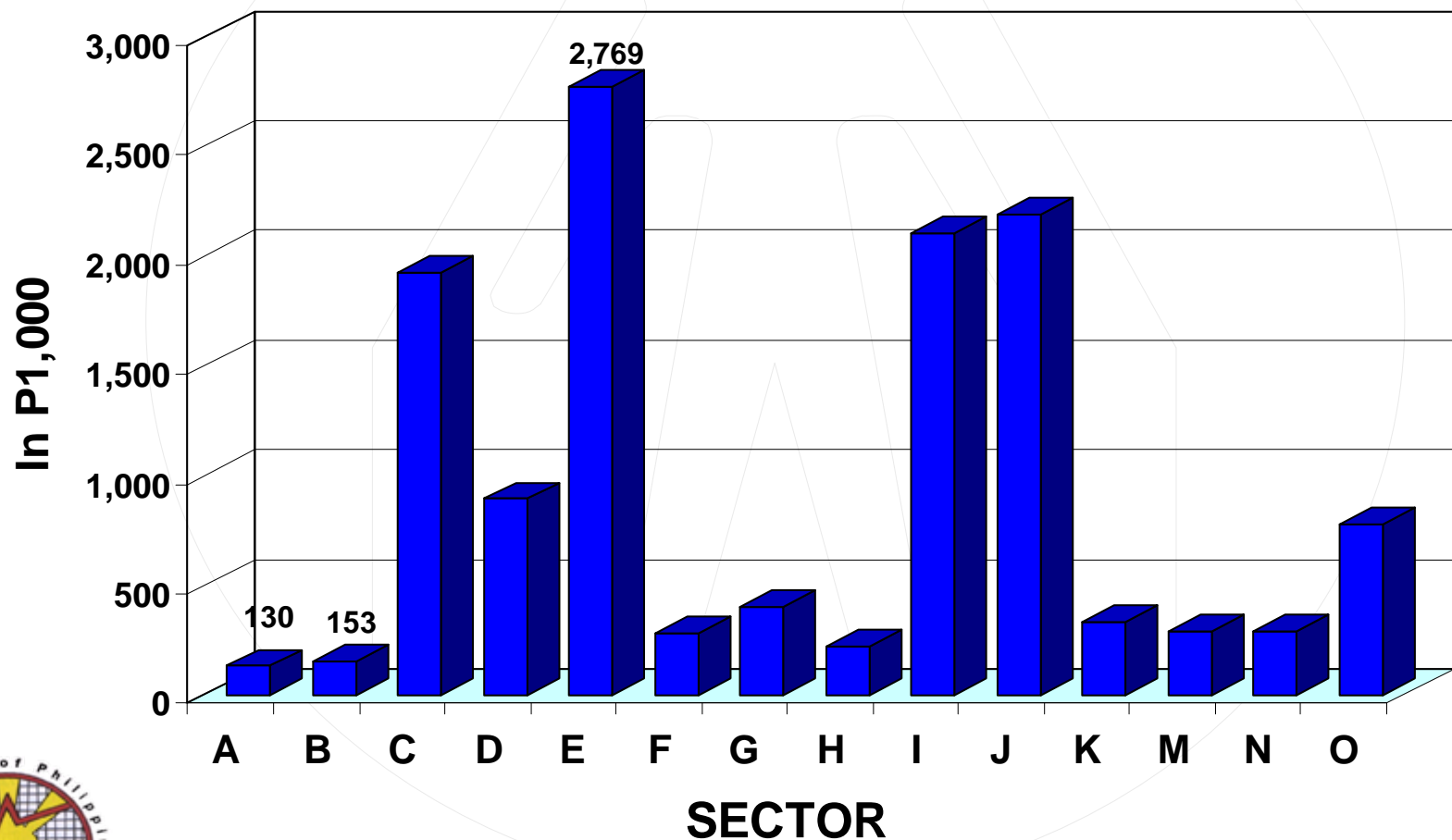
# Value Added for Establishments with ATE of 20 and Over by Sector: 2006



# Revenue per Employment for Establishments with ATE of 20 and Over by Sector: 2006



# Value Added per Employment for Establishments with ATE of 20 and Over by Sector: 2006







NSO

National Statistics Office, Republic of the Philippines

# Performance of the Economy in comparison with 2005



2006 Census of Philippine Business and Industry Data Dissemination

# Preliminary results show that...

- Number of establishments declined by 19.7%
- Employment decreased by 4.0%
- Revenue/Sales grew by 3.3%
- Value added rose by 12.0%
- Value added per employment increased by 16.6%
- Revenue per employment up by 7.6%



# Ayon sa statistics...



# Ang tanong...

- Top 5 employers?

# Ayon sa senso...

- Manufacturing
- Real Estate
- Wholesale and Retail Trade
- Private Education
- Hotels and Restaurants

# Ang tanong...

- Top 5 revenue generators?

# Ayon sa senso...

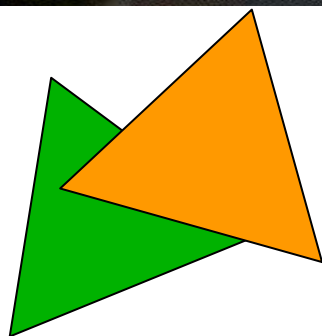
- Manufacturing
- Wholesale and Retail Trade
- Financial Intermediation
- Electricity, Gas and Water Supply
- Transport, Storage and Communications

# Ang tanong...

- Top 5 labor productive sectors?

# Ayon sa senso...

- Electricity, Gas and Water Supply
- Financial Intermediation
- Transport, Storage and Communications
- Mining and Quarrying
- Manufacturing



# Maraming Salamat Po!!!

