



Australian Bureau of Statistics

7121.0 - Agricultural Commodities, Australia, 2015-16

Previous ISSUE Released at 11:30 AM (CANBERRA TIME) 07/07/2017

Summary

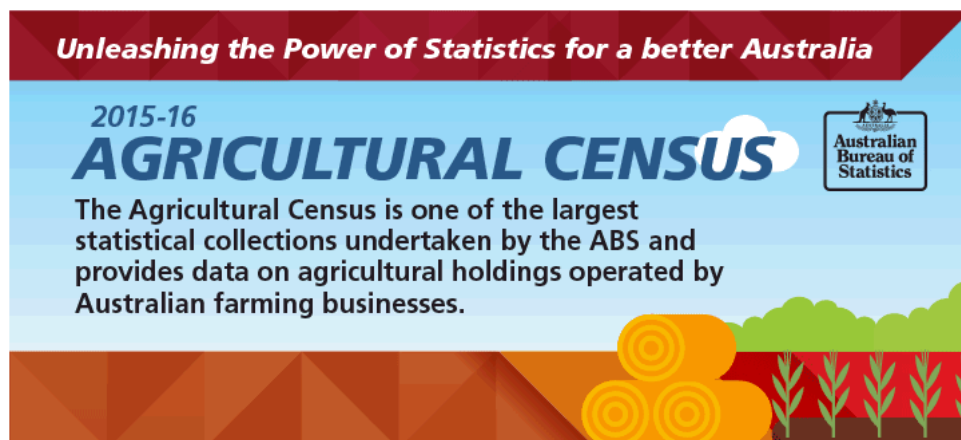
Key Findings

KEY FINDINGS

As part of this publication, the Australian Bureau of Statistics (ABS) has released a short video animation covering key findings from the 2015-16 Agricultural Census. This video can be accessed from the link below.



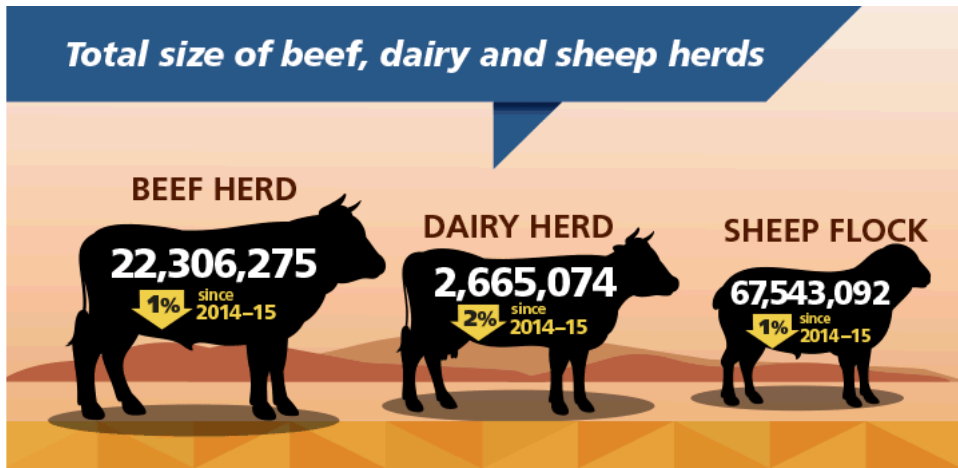
The Agricultural Census is one of the largest statistical collections undertaken by the ABS and provides data on agricultural holdings operated by Australian farming businesses.



Data was collected throughout 2015-16 from businesses ranging from beef cattle production to broadacre farming and vineyards.



Number of Australian farming businesses: 85,681.

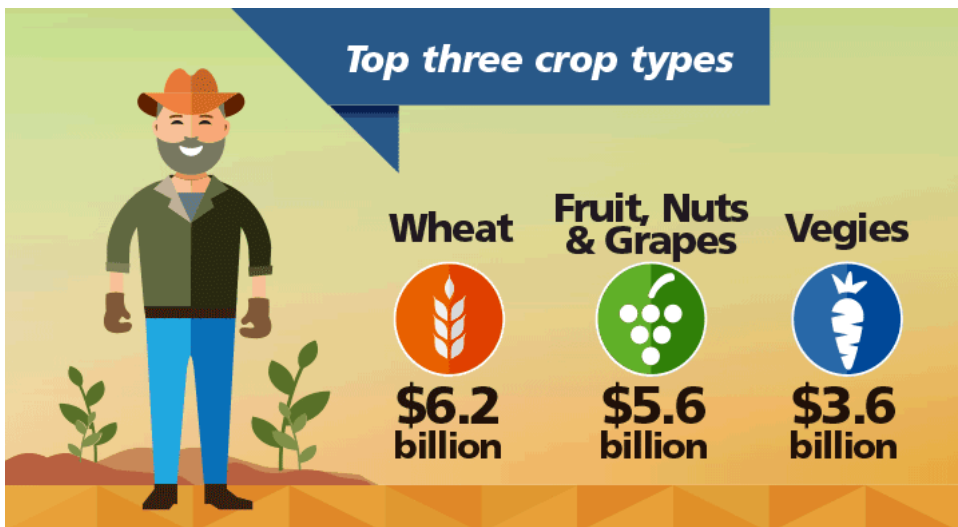


Total size of beef, dairy and sheep herds

- Beef herd: 22,306,275. Down 1% since 2014-15
- Dairy herd: 2,665,074. Down 2% since 2014-15
- Sheep flock: 67,543,092. Down 1% since 2014-15.

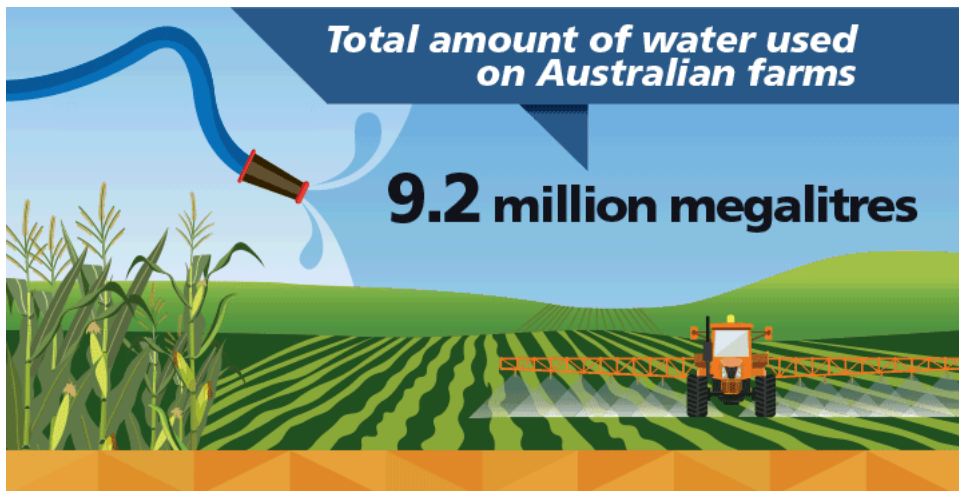


Gross value of Australia's agricultural production: \$56 billion in 2015-16.

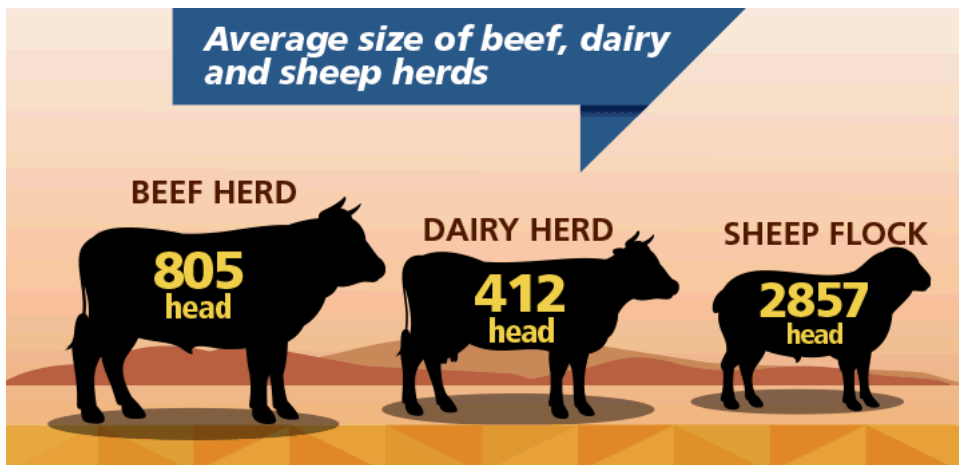


Top three crop types

- Wheat: \$6.2 billion
- Fruit nuts and grapes: \$5.6 billion
- Vegies: \$3.6 billion.

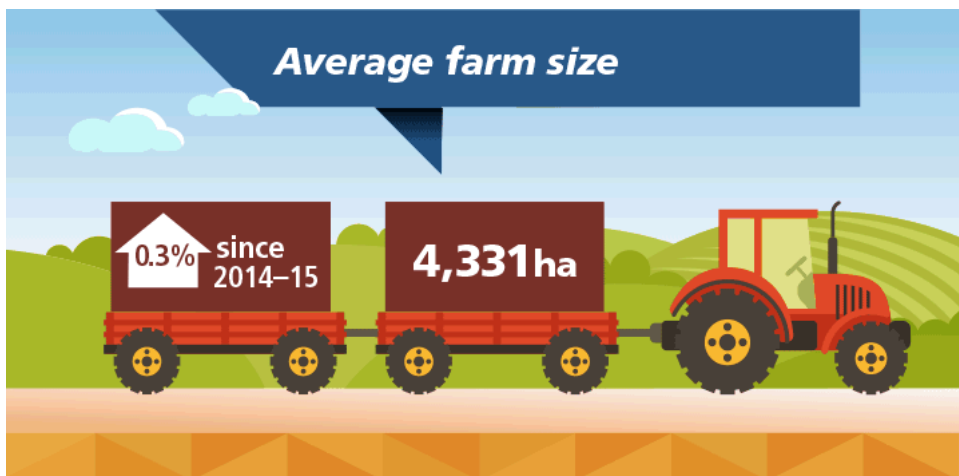


Total amount of water used on Australian farms: 9.2 million megalitres.

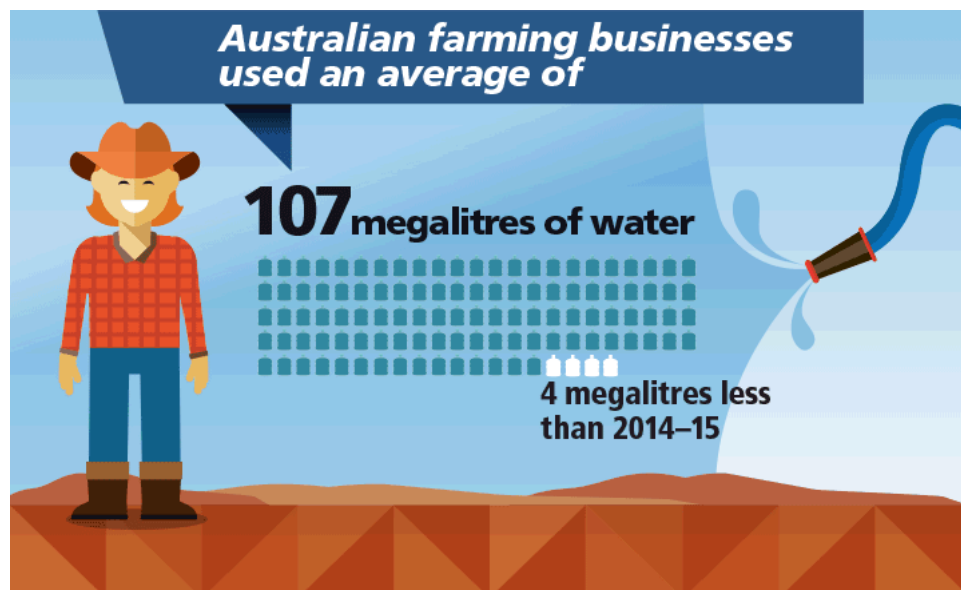


Average size of beef, dairy and sheep herds

- Beef herd: 805 head
- Dairy herd: 412 head
- Sheep flock: 2,857 head.



Average farm size: 4,331ha which is up 0.3% since 2014-15.



Australian farming businesses used an average of 107 megalitres of water. 4 megalitres less than 2014-15.

Agricultural Census Fact sheets

Australian Agriculture - 2015-16 Agricultural Census Fact Sheets

Fact sheets for Australia, states and territories are available as a pdf document in the downloads tab of this publication. Each fact sheet contains state or territory specific data on key crops, horticulture and livestock as well as water use and the gross value of key commodities.

Fact sheets are also available for selected commodities as a pdf document in the downloads tab of this publication. The fact sheets provide a snapshot of the production of key commodities, livestock numbers and gross value. Fact sheets are available for the following commodities:

- Wheat
- Oats
- Barley
- Sorghum
- Canola
- Cotton
- Fruit and Nuts (excluding grapes)
- Wine grapes
- Vegetables
- Sheep and Lambs
- Dairy Cattle
- Beef Cattle
- Pigs

The ABS will be releasing additional data from the 2015-16 Agricultural Census in the coming months. Inquiries should be made to the National Information and Referral Service on 1300 135 070.

Land Use and Farm Management

KEY FIGURES

LAND USE, Australia, year ended 30 June 2016

	Aust. '000 ha	NSW '000 ha	Vic. '000 ha	Qld '000 ha	SA '000 ha	WA '000 ha	Tas. '000 ha	NT '000 ha	ACT '000 ha
Area of farms	371 078	53 438	10 676	127 551	47 580	76 802	1 459	53 546	25
Area of crops (a)	24 628	6 374	4 142	2 336	3 544	8 104	np	np	np
Area of non-agricultural land	398 124	26 626	12 065	45 514	50 768	176 185	5 381	81 367	210
Total land area (b)	769 202	80 064	22 742	173 062	98 348	252 988	6 840	134 913	236

np not available for publication

(a) Includes broadacre crops, hay and silage and horticulture

(b) Total land area supplied by Geoscience Australia

KEY LAND USE POINTS

- At 30 June 2016 there were 371 million hectares of agricultural land in Australia, a 1% increase compared with the previous year. Coinciding with this increase in agricultural land, there were 952 more agricultural businesses, representing a 1% increase since 2014-15.
- Of all the states and territories, Queensland had the highest proportion of agricultural land, accounting for 34% of total area of holding in Australia, a decline of 1% since 2014-15.

FARM MANAGEMENT, Australia, year ended 30 June 2016

	Aust.	NSW	Vic.	Qld	SA	WA	Tas.	NT	ACT
Average age of provider (yrs)	56	57	57	56	55	55	55	50	58
Average time provider involved in farming (yrs)	35	36	36	36	34	34	34	24	30
Male providers (%)	78	78	80	73	83	80	81	66	67
Female providers (%)	22	22	20	27	17	20	19	34	33

SOURCES OF FARM INCOME (%)

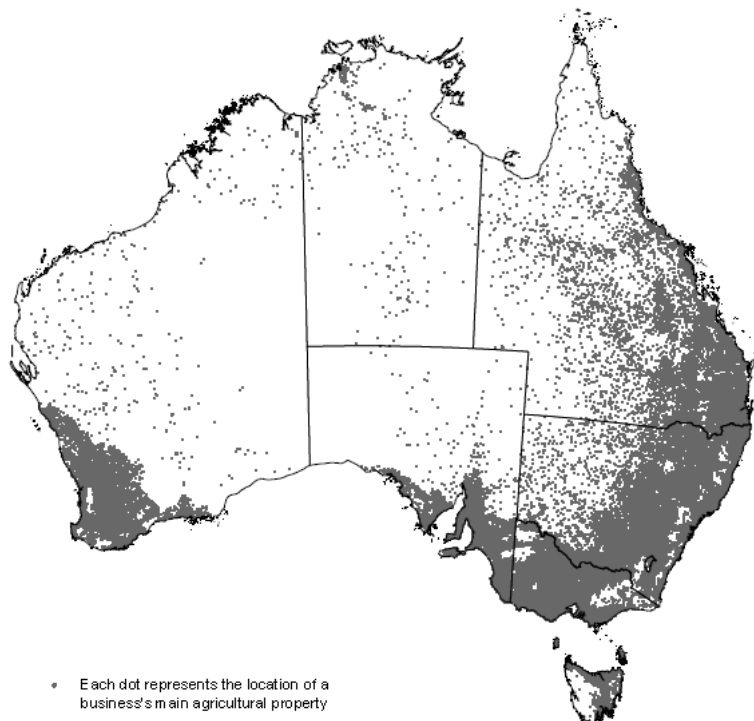
Agricultural production on holding	84	82	84	82	88	87	83	82	66
Off-farm employment/business activities	12	13	12	14	9	10	14	11	22
Other sources including grants, government transfers and relief funding	4	4	4	5	3	3	3	np	np
Not stated	0	0	0	0	0	0	1	1	0

np not available for publication

KEY FARM MANAGEMENT POINTS

In 2015-16, key attributes of Australian farm management were:

- The average number of years respondents were involved in farming was 35. New South Wales, Queensland and Victoria had the highest average at 36 years and the Northern Territory the lowest at 24 years.
- The majority of business income for agricultural producers in 2015-16 was from agricultural production (84%), up from 83% in 2014-15.
- Figure 1 shows the location of agricultural businesses in Australia



0 1,000
Kilometers

Source: ABS Business Register;
Geocoded National Address File
© Commonwealth of Australia, 2017

CHANGE IN COLLECTION SCOPE

- The scope for the 2015-16 Agricultural Census was all agricultural businesses with an Estimated Value of Agricultural Operations (EVAO) of \$40,000 or greater. This is a change from previous ABS rural environment and agricultural collections, where a scope of EVAO of \$5,000 or greater was used. This change was foreshadowed in February 2016 in Agricultural Census: Nature and Content, 2015-16 (cat. no 7100.1).
- The 2014-15 estimates presented in this publication have been revised to use the new scope of \$40,000 or greater.
- For more information about EVAO and the change in scope, refer to the Explanatory Notes within this release.

Crops

KEY FIGURES

BROADACRE CROPS, Australia, year ended 30 June 2016

	Production	Change in production since 2014-15(a)	Area	Change in area since 2014-15(a)	Yield	Change in yield since 2014-15(a)
	'000 t	%	'000 ha	%	t/ha	%
Wheat for grain	22 275	-5	11 282	-8	2.0	3
Oats for grain	1 300	14	821	2	1.6	11
Barley for grain	8 992	6	4 108	3	2.2	3
Grain sorghum	1 791	-16	521	-26	3.4	14
Maize for grain	400	-18	53	-8	7.5	-10
Rice for grain	274	-58	27	-61	10.3	6
Triticale for grain	127	-9	78	-2	1.6	-7
Cotton lint (b)	551	32	280	43	2.0	-7
Canola	2 775	-21	2 091	-27	1.3	9
Sugar cane cut for crushing	34 403	9	377	2	91.2	6

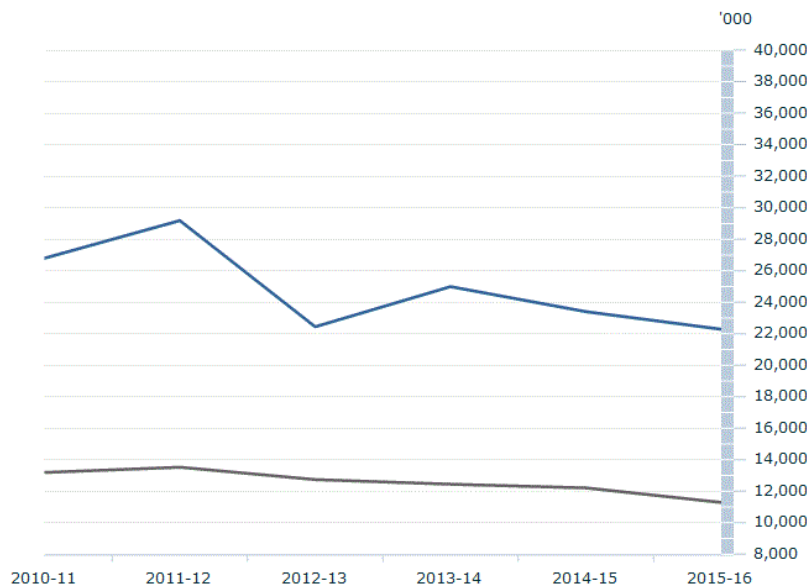
(a) Percentage change since 2014-15 is calculated using estimates with an EVAO of \$40,000 or greater

(b) Includes irrigated and non-irrigated cotton

KEY POINTS

- Nationally, wheat production fell by 5% to 22 million tonnes in 2015-16. Warm, dry conditions in Southern Australia, particularly in South Australia (down 18%), Victoria (down 29%) and areas of Western Australia (down 3%), saw large decreases in production. The area planted to wheat nationally decreased by 8%, down to 11 million hectares.
- Total oat production increased by 14% to 1.3 million tonnes, with yields rising to 1.6 tonnes per hectare (an 11% increase since 2014-15). Growing conditions in eastern states impacted the quality of crops for milling grade oats. The briefer growing period of oats attracted farmers who have been dealing with ongoing dry conditions and the continuing dry lead in to spring.
- Favourable growing conditions and water access have resulted in an increase in cotton production from 2014-15. Nationally, cotton production increased 32% to 551 million kilograms, and the area planted to cotton increased by 43% to 280 thousand hectares.
- Total sorghum production decreased by 16% (to 1.8 million tonnes) in 2015-16. Grain sorghum production in Queensland decreased by 25% to (1.2 million tonnes) with strong regional differences resulting from mixed weather conditions. As a summer crop, heavily susceptible to overly warm conditions, the dry and hot weather in central Queensland yielded poor results. Southern Queensland and New South Wales fared better, with good growing conditions and higher yields. New South Wales produced 604,000 tonnes of sorghum, 7% up on last year despite a 12% decrease in area planted.
- Production of barley increased by 6% in Australia to 9.0 million tonnes. Timely rainfall and good conditions along with greater area planted (up 3%) produced good yields and increased production in New South Wales (up by 39%). Victoria experienced the lowest yield nationally, at 1.3 tonnes per hectare, predominantly driven by dry conditions, consistent with yields for winter crops in Victoria. The dry conditions seen in Victoria also extended through to South Australia and impacted the crop there with slightly lower yields and farmers planting a smaller crop than previous years (down 5%).

Broadacre crops



■ Production (t) ■ Area (ha)

Select a different graph

Wheat ▼

Save Chart Image

Australian Bureau of Statistics

© Commonwealth of Australia 2017.

Source(s): Agricultural Commodities, Australia (cat. no. 7121.0)

CHANGE IN COLLECTION SCOPE

- The scope for the 2015-16 Agricultural Census was all agricultural businesses with an Estimated Value of Agricultural Operations (EVAO) of \$40,000 or greater. This is a change from previous ABS rural environment and agricultural collections, where a scope of EVAO of \$5,000 or greater was used. This change was foreshadowed in February 2016 in Agricultural Census: Nature and Content, 2015-16 (cat. no 7100.1).
- The 2014-15 estimates presented in this publication have been revised to use the new scope of \$40,000 or greater.
- For more information about EVAO and the change in scope, refer to the Explanatory Notes within this release.

Horticulture

KEY FIGURES

STONE AND ORCHARD FRUIT AND NUTS, Australia, year ended 30 June 2016

	Production	Change in production since 2014-15	Fruit bearing trees	Change in fruit bearing trees since 2014-15	Yield	Change in yield since 2014-15
	t	%	'000	%	kg/tree	%
Almonds	72 902	30	7 111	31	10.3	-1
Apples	308 298	5	11 367	12	27.1	-7
Avocados	67 600	39	1 322	9	51.1	28
Cherries	18 374	22	1 886	10	9.7	10
Macadamias	38 759	8	5 047	6	7.7	2
Mandarins	125 233	24	2 118	12	59.1	10
Mangoes	42 515	12	1 217	21	34.9	-8
Nectarines	31 851	-2	1 719	14	18.5	-14
Olives	75 084	55	4 805	14	15.6	37
Oranges	398 610	19	6 596	0	60.4	20
Peaches	48 957	7	1 843	8	26.6	-1
Pears (a)	104 928	0	1 441	-10	72.8	11

(a) Includes nashi

OTHER FRUIT, Australia, year ended 30 June 2016

Production	Change in production	Fruit bearing area	Change in fruit bearing	Yield	Change in yield since
------------	----------------------	--------------------	-------------------------	-------	-----------------------

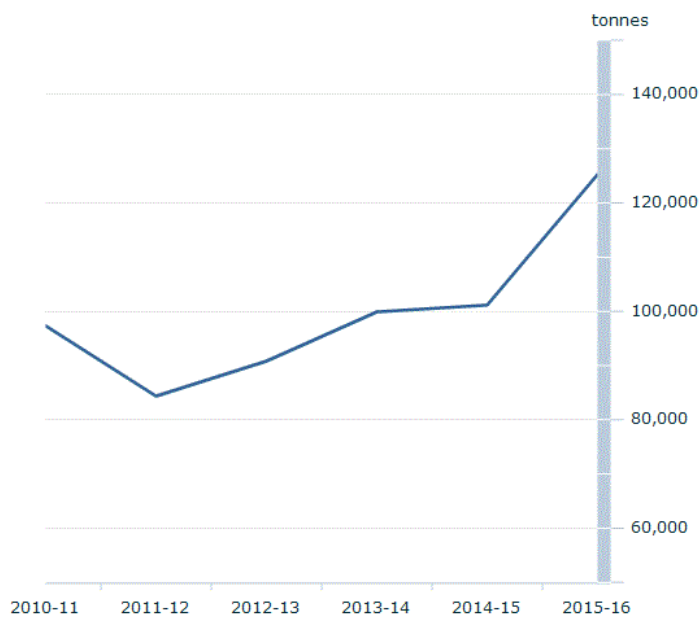
	t	since 2014-15 %	ha	area since 2014-15 %	t/ha	2014-15 %
Bananas	354 241	43	15 610	51	22.7	-5
Pineapples	71 782	-1	1 609	-11	44.6	11
Strawberries	48 401	7	1 995	-9	24.3	18
Grapes	1 772 911	8	129 946	-1	13.7	9

VEGETABLES, Australia, year ended 30 June 2016

	Production t	Change in production since 2014-15 %	Area ha	Change in area since 2014-15 %	Yield t/ha	Change in yield since 2014-15 %
Beans (b)	35 602	5	6 795	11	5.2	-5
Capsicums (c)	36 793	-15	1 778	-6	20.7	9
Carrots	299 612	15	5 245	14	57.1	1
Melons (d)	239 146	-9	6 148	-5	38.9	-4
Mushrooms	50 388	18	144	-6	351.1	25
Onions (e)	264 547	-16	4 707	-20	56.2	6
Potatoes (f)	1 130 175	-1	27 968	-3	40.4	2
Tomatoes (f)	405 167	5	5 430	-4	74.6	9

- (b) Includes french and runner
- (c) Excludes chillies
- (d) Includes rock, bitter and water
- (e) Includes brown, red and white onions
- (f) Includes processing and fresh market

Fruit



Quantity

Select a different graph

Mandarins

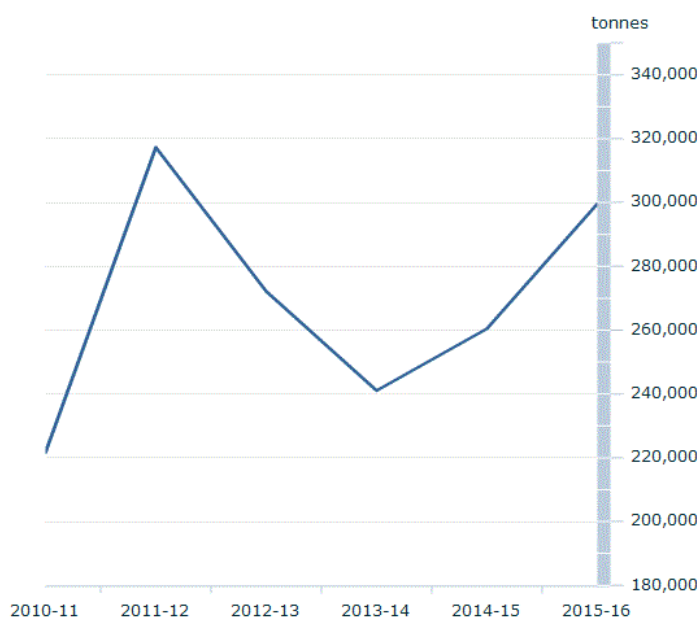
Save Chart Image

Australian Bureau of Statistics
© Commonwealth of Australia 2017.

Footnote(s): (a) Including nashi

Source(s): Agricultural Commodities, Australia (cat. no. 7121.0)

Vegetables



Quantity

Select a different graph

Carrots

Save Chart Image

Australian Bureau of Statistics
© Commonwealth of Australia 2017.

Footnote(s): (a) Includes processing, fresh market outdoor and fresh market undercover; (l) Includes brown, red and white onions;

Source(s): Agricultural Commodities, Australia (cat. no. 7121.0)

KEY POINTS

- Increased production was reported nationally across most fruit and nut commodities. Queensland and Victoria were both major contributors with both these states reporting increases in key fruit commodities.
- Mandarin production grew nationally by 24,100 tonnes or 24% in 2014-15 driven by increases in production in all states. In Queensland (which accounts for 59% of national mandarin production), production increased by 23% (up to 74.2 million tonnes) due predominantly to an increase

in the number of bearing age trees (up 11%).

- Nationally, avocado production reached record numbers in 2015-16 (up 39% to 67,600 tonnes) due to increased production levels in all states, particularly Western Australia (up 53%) and Queensland (up 24%) which together account for more than three quarters of the national crop.
- Apple production increased nationally by 5% to 308,300 tonnes with increased production in all states, except New South Wales and Victoria. The largest apple growing state, Victoria (accounting for 43% of the total) had a decrease of 1% following unfavourable weather events in the Goulburn Valley growing region including a series of hail storms through late 2015 and early 2016.
- Hail damage also impacted pear production in Victoria (which accounts for almost 90% of the nation's pear production), causing extensive damage to crops. Despite these conditions, Victoria pear production remained steady for 2015-16 at 93,500 tonnes.
- Almond production increased nationally by 30% to a record high of 73,000 tonnes following increases in production in both Victoria (up 29% to 56,000 tonnes) and South Australia (up 56% to 14,000 tonnes).

CHANGE IN COLLECTION SCOPE

- The scope for the 2015-16 Agricultural Census was all agricultural businesses with an Estimated Value of Agricultural Operations (EVAO) of \$40,000 or greater. This is a change from previous ABS rural environment and agricultural collections, where a scope of EVAO of \$5,000 or greater was used. This change was foreshadowed in February 2016 in Agricultural Census: Nature and Content, 2015-16 (cat. no 7100.1).
- The 2014-15 estimates presented in this publication have been revised to use the new scope of \$40,000 or greater.
- For more information about EVAO and the change in scope, refer to the Explanatory Notes within this release.

Livestock

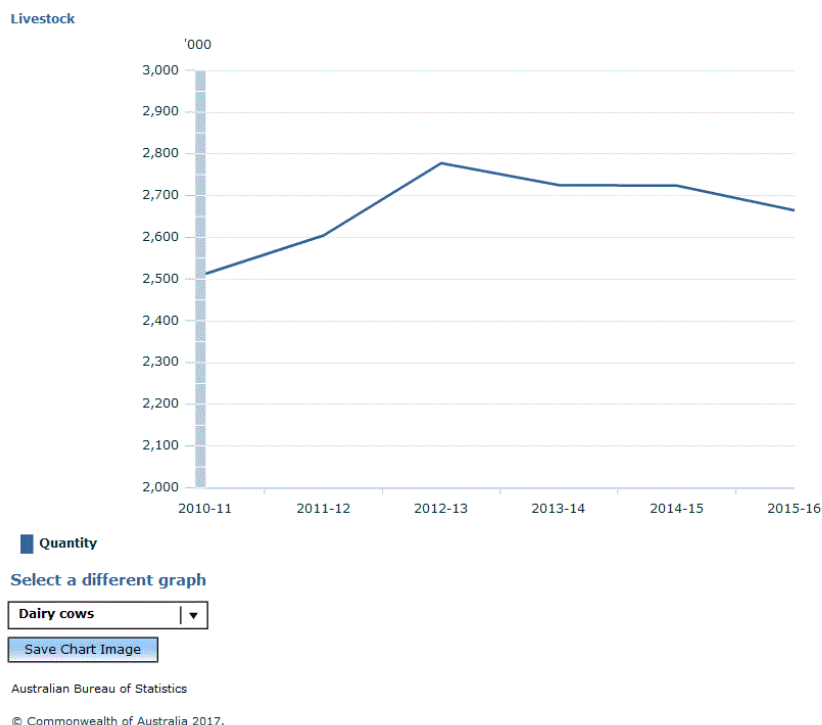
KEY FIGURES

LIVESTOCK, Australia, year ended 30 June 2016

	Number on holding '000	Change in number on holding since 2014-15 %
CATTLE AND CALVES		
Dairy cattle		
Cows in milk and dry	1 562	-5
Calves (under one year)	451	3
Heifers (one to two years)	441	0
Heifers (over two years)	131	4
All other dairy cattle (a)	81	10
<i>Total dairy cattle</i>	<i>2 665</i>	<i>-2</i>
Meat cattle		
Calves (Under one year)	5 162	3
Cows and heifers (over one year)	11 452	-1
All other meat cattle (a)	5 693	-6
<i>Total meat cattle</i>	<i>22 306</i>	<i>-1</i>
Total cattle and calves	24 971	-1
SHEEP AND LAMBS		
Lambs (under one year)	21 359	2
Breeding ewes (one year and over, merino and all other)	37 182	-1
All other sheep and lambs	9 003	-5
Total sheep and lambs	67 543	-1
PIGS		
Breeding sows	240	-11
All other pigs (b)	2 055	3
Total pigs	2 294	1

(a) Includes bulls and steers

(b) Includes boars, gilts, suckers, weaners, growers and finishers



Source(s): Agricultural Commodities, Australia (cat. no. 7121.0)

KEY POINTS

- The national total stock of dairy cattle for 2015-16 decreased by 2% to 2.7 million head. The change was driven by a decline of 6% in Victorian stocks which has about two thirds of the country's dairy cattle.
- Total meat cattle in Australia decreased by 302,000 head (1%) with Western Australia being the main contributor to the decrease with 12% fewer head.
- The total number of sheep and lambs remained fairly steady in 2015-16 however numbers in Victoria fell by 5% where unfavourable weather conditions were experienced throughout the state.
- The total number of pigs continued to steadily rise, increasing nationally by 1% in 2015-16.

CHANGE IN COLLECTION SCOPE

- The scope for the 2015-16 Agricultural Census was all agricultural businesses with an Estimated Value of Agricultural Operations (EVAO) of \$40,000 or greater. This is a change from previous ABS rural environment and agricultural collections, where a scope of EVAO of \$5,000 or greater was used. This change was foreshadowed in February 2016 in Agricultural Census: Nature and Content, 2015-16 (cat. no 7100.1).
- The 2014-15 estimates presented in this publication have been revised to use the new scope of \$40,000 or greater.
- For more information about EVAO and the change in scope, refer to the Explanatory Notes within this release.

About this Release

This publication contains final estimates of land use, crop and horticultural area and production, livestock numbers and farm management and demographic information for Australia, states and territories. Additional commentary for Australia, states and territories and datacubes for sub-state levels will be released at a later date.

History of changes

This document was added or updated on 28/07/2017.

30/10/2018 This release contains commodity data at Local Government Area level, organic production data at NRM and ASGS level and a geopackage.

1/11/2017 This release contains data previously not available for release at SA4 and NRM level.

31/10/2017 Additional information for Agricultural Commodities, Australia, 2015-16 is now available. Small area datacubes which include national, state/territory, Australian Statistical Geography Standard (ASGS) Statistical Area 2 (SA2) region estimates are now available for download.

28/07/2017 A correction to the unit of measure for Kiwifruit production has been made in the datacube.

Mixed results for agricultural production in 2015-16 (Media Release)

7 July 2017

MEDIA RELEASE
Embargo: 11.30am (Canberra Time)

82/2017

Mixed results for agricultural production in 2015-16

Variable regional climatic conditions have proved both a boon and a burden to agricultural production and stocking rates in 2015-16, according to the Agricultural Census data released today by the Australian Bureau of Statistics (ABS).

Data collected from around 104,000 businesses ranging from beef cattle production to broadacre farming and vineyards has produced a picture of Australia's agricultural sector.

ABS Director of Environment and Agriculture Statistics, Lauren Binns said while winter and spring rain in parts of New South Wales and Queensland had produced bumper crops in commodities like barley, a warm dry spring in southern Australia saw a decrease in other crops.

"Barley production increased by 6 per cent in 2015-16, driven by New South Wales farmers increasing their planting area with excellent yields," Ms Binns said.

"But wheat production fell by 5 per cent as a result of hot conditions in late spring in South Australia and Victoria. Similarly, production of canola fell by 21 per cent with reductions in the area planted in Western Australia and poor conditions in South Australia and Victoria."

To the north, favourable conditions in Queensland and the Northern Territory had contributed to the earlier than anticipated restocking of beef cattle herds.

"Nationally, the national meat cattle herd fell by 1 per cent to 22.3 million, with small falls across most states offset by increases in the NT.

"Dairy herds fell by 2 per cent to approximately 2.7 million, while the sheep flock fell by 1 per cent to around 67.5 million."

Nationally, the number of agricultural businesses increased by 1 per cent to 85,681 in line with a similar increase in the total area of agricultural holdings.

Ms Binns said strong support from the agricultural sector was the foundation of the Agriculture Census – the ABS' largest business collection - and the ABS greatly appreciated farmers' time and effort in providing data.

The minimum size for a farming business to be included in the Agricultural Census was increased this year, from those with an average annual turnover of \$5000 or more to those with a turnover of \$40,000 or more.

This new scope is more in line with other statistical collections and significantly reduced the survey burden on small farming operations.

Further details are available in Agricultural Commodities, Australia (2015-16) (cat. no. 7121.0) available for free download from the ABS website www.abs.gov.au

Media note:

· Media contact: For more information and interview opportunities, phone 1300 175 070 or email media@abs.gov.au

Explanatory Notes

Explanatory Notes

EXPLANATORY NOTES

INTRODUCTION

1 This publication contains final estimates for data items collected in the 2015-16 Agricultural Census. Included are statistics on land use, crop and horticultural area and production, livestock numbers, farm management and demographic information.

2 National and state/territory level estimates are presented in this release. Data at sub-state levels including Australian Statistical Geography Standard (ASGS) (2011 edition) Statistical Area 4 (SA4), Statistical Area 2 (SA2) and Natural Resource Management (NRM) regions will be released as data cubes (Excel xlsx), zipped Excel files and comma separated value (csv) files attached to the publication.

3 The Agricultural Census is conducted once every five years, with the Rural Environment and Agricultural Commodity Survey (REACS) conducted annually in the intervening years. The main purpose of the Agricultural Census is to provide benchmark information on the agriculture industry for small geographic areas.

4 Estimates in this publication were compiled from information obtained from the Agricultural Census for the financial year ended 30 June 2016. Administrative data from non-Australian Bureau of Statistics (ABS) sources was also used to supplement reported data. A copy of the 2015-16 Census form can be found under the Downloads tab of this publication.

SCOPE AND COVERAGE

5 The scope of the 2015-16 Agricultural Census was all businesses undertaking agricultural activity recorded on the Australian Bureau of Statistics' Business Register (ABSBR) above a minimum threshold applied to the estimated value of their agricultural operations.

6 For the purposes of the Agricultural Census a business (statistical unit) is identified as undertaking agricultural activity if any of the primary or secondary productive activities of that business fall within the Agriculture Subdivision (Subdivision 01) as defined by the 2006 edition of the Australian and New Zealand Standard Industrial Classification (ANZSIC). For more information, please refer to Australian and New Zealand Standard Industrial Classification (ANZSIC), 2006 (cat. no. 1292.0).

7 The ABSBR is based on the Australian Business Register (ABR). Most businesses and organisations in Australia are required to obtain an Australian Business Number (ABN) from the Australian Taxation Office (ATO) for their business operations. The ABR stores details about businesses and organisations when they register for an ABN.

8 Estimated Value of Agricultural Operations (EVAO) was used to determine whether an agricultural business operation was in-scope for the 2015-16 Agricultural Census. EVAO is an ABS construct used to estimate the relative size of agricultural activity undertaken by a business. Three-year average weighted prices are applied to livestock sales and livestock numbers on the farm, and to area and production data for crops. The resultant aggregation of these commodity values is the EVAO. It is not an indicator of the value of receipts of individual farms (turnover) but rather an indicator of the size or extent of agricultural activity. A three year average weight price is used to minimise the effects of both large movements in commodity prices and seasonal conditions which may otherwise unduly influence a business' EVAO. For businesses with no previously reported agricultural activity a derived value of operations based on turnover reported in its Businesses Activity Statement (BAS) is used as a proxy.

9 As noted in the publication Agricultural Census: Nature and Content, 2015-16 (cat. no 7100.1), the scope for the 2015-16 Agricultural Census was all agricultural businesses with an EVAO of \$40,000 or greater. This is a change from previous ABS Rural Environment and Agricultural Collections, where a scope of EVAO of \$5,000 or greater was used. The change in scope better aligns this collection with contemporary definitions of an agricultural business and reduces the overall reporting load for smaller agricultural businesses. It is proposed that only agricultural businesses with an EVAO of \$40,000 or greater will be in scope for ABS rural environmental and agricultural commodity collections in 2016-17 and beyond.

10 As a result of the change in scope, the estimates from the 2015-16 Agricultural Census will not be directly comparable to previous published Agricultural Censuses or annual Rural Environment and Agricultural Commodity Survey outputs. To address this, additional estimates have been produced from a number of rural environment and agricultural commodity collections from 2010-11 to 2014-15 using an EVAO of \$40,000 or greater. These estimates are now available at the national, state/territory levels and sub-state levels on the ABS website.

11 The 2015-16 Census final estimates are based on the achieved target response rate of 85% from an in-scope population of approximately 103,400 agricultural businesses.

RELIABILITY OF ESTIMATES (SAMPLE ERROR)

12 The estimates in this publication are based on information obtained from agricultural businesses that responded to the 2015-16 Agricultural Census. However, since not all of the businesses that were selected provided data, the estimates are subject to sampling variability; that is, they may differ from the figures that would have been produced if information had been collected from all businesses.

13 One measure of the likely difference is given by the standard error (SE) which indicates the extent to which an estimate might have varied by chance because only a sample was taken or received. There are approximately two chances in three that a 'sample' estimate will differ by less than one SE from the figure that would have been obtained if all establishments had responded or been reported for, and approximately 19 chances in 20 that the difference will be less than two SEs.

14 In this publication, 'sampling' variability of the estimates is measured by the relative standard error (RSE) which is obtained by expressing the SE as a percentage of the estimate to which it refers. Most published estimates have RSEs less than 10%. For some states and territories with limited production of certain commodities, RSEs are greater than 10%. Estimates that have an estimated RSE between 10% and 25% should be used with caution as they are subject to sampling variability too high for some purposes. Estimates with an RSE between 25% and 50% should also be used with caution as they are subject to sampling variability too high for most practical purposes. Estimates with an RSE greater than 50% are considered too unreliable for general use.

15 RSEs for all published estimates are available on request.

16 A table with RSEs for selected commodities follows:

RELATIVE STANDARD ERRORS OF SELECTED ESTIMATES - year ended 30 June 2016

	Aust. %	NSW %	Vic. %	Qld %	SA %	WA %	Tas. %	NT %	ACT %
Barley for grain - Production (t)	0.5	1.1	0.9	2.6	0.6	0.6	6.8	14.8	–
Canola - Production (t)	0.6	1.1	1.5	12.8	1.6	0.7	9.0	14.7	–
Cotton - Production (kg)	1.0	1.2	–	2.0	–	–	–	–	–
Grain sorghum - Production (t)	1.3	2.9	11.4	1.4	22.2	8.5	–	–	–
Oats for grain - Production (t)	1.0	2.7	2.0	4.9	1.9	1.1	12.8	–	–
Wheat for grain - Production (t)	0.3	0.7	0.8	1.4	0.6	0.5	3.8	14.8	–
Carrots - Production (t)	1.3	13.3	1.7	0.9	0.4	3.1	4.6	–	–
Oranges - Production (t)	2.3	4.1	3.9	6.9	2.1	4.4	–	43.6	–
Potatoes - Production (t)	1.4	1.5	4.0	5.2	2.3	3.0	2.4	–	–
Total Dairy cattle (no.)	0.5	1.6	0.6	1.7	2.3	1.5	1.4	25.9	–
Total Meat cattle (no.)	0.4	0.5	0.6	0.5	1.0	1.4	1.3	3.0	5.1
Total Sheep and lambs (no.)	0.3	0.5	0.5	1.8	0.6	0.5	1.8	–	4.7

- nil or rounded to zero (including null cells)

ROUNDING AND CONFIDENTIALITY

17 Where figures for individual states or territories have been suppressed for reasons of confidentiality, they have been included in relevant totals.

18 Where figures have been rounded, discrepancies may occur between sums of the component items and totals.

RELATED PUBLICATIONS

19 Final estimates from the 2015-16 Agricultural Census for water use are available in Water Use on Australian Farms (cat. no. 4618.0) and land management will be published in Land Management and Farming in Australia (cat. no. 4627.0) in August 2017.

20 Final estimates of the gross value of principal agricultural commodities from the 2015-16 Value of Agricultural Commodities Produced (VACP) Collection are available in Value of Agricultural Commodities Produced, Australia, 2015-16 (cat. no. 7503.0).

21 ABS publications related to the 2015-16 Agriculture Census can be accessed under the **Statistics** page on the ABS website. The ABS also issues a daily Release Advice on the website which details products to be released in the week ahead.

ABS DATA AVAILABLE ON REQUEST

22 As well as the statistics included in this and related publications, the ABS may have other relevant data available on request. Inquiries should be made to the National Information and Referral Service on 1300 135 070.

GENERAL ACKNOWLEDGMENT

23 ABS publications draw extensively on information provided freely by individuals, businesses, governments and other organisations. Their continued cooperation is very much appreciated. Without it, the wide range of statistics published by the ABS would not be available. Information received by the ABS is treated in strict confidence as required by the **Census and Statistics Act 1905**.

PRIVACY

24 The ABS Privacy Policy outlines how the ABS will handle any personal information that you provide to the ABS.

Abbreviations

ABBREVIATIONS

'000	thousand
'000 ha	thousand hectares
'000 t	thousand tonnes
AAE	Australian Agricultural Environments
ABARES	Australian Bureau of Agricultural and Resource Economics and Sciences
ABN	Australian Business Number
ABR	Australian Business Register
ABS	Australian Bureau of Statistics
ABSBR	Australian Bureau of Statistics Business Register
ACT	Australian Capital Territory
ANZSIC	Australian and New Zealand Standard Industrial Classification
ASGS	Australian Statistical Geography Standard
ATO	Australian Taxation Office
Aust.	Australia
BAS	Business Activity Statement
cat. no.	catalogue number
csv	comma separated values file
EVAO	Estimated Value of Agricultural Operations
ha	hectare
excl.	excluding
kg	kilogram
kg/ha	kilograms per hectare
kg/tree	kilograms per tree
m ²	metres square
na	not available
np	not published
n.e.c.	not elsewhere classified
no.	number
NRM	Natural Resource Management
NSW	New South Wales
NT	Northern Territory
Qld.	Queensland
REACS	Rural Environment and Agricultural Commodities Survey
RSE	relative standard error
SA	South Australia
SA2	Statistical Area 2
SA4	Statistical Area 4
SE	standard error
t	tonne
t/ha	tonnes per hectare
Tas.	Tasmania
VACP	Value of Agricultural Commodities Produced
Vic.	Victoria
WA	Western Australia
xls	Microsoft Excel spreadsheet file

Quality Declaration

QUALITY DECLARATION — SUMMARY

INSTITUTIONAL ENVIRONMENT

For information on the institutional environment of the Australian Bureau of Statistics (ABS), including the legislative obligations of the ABS, financing and governance arrangements, and mechanisms for scrutiny of ABS operations, please see ABS Institutional Environment.

RELEVANCE

Final estimates from the 2015–16 Agricultural Census will be presented in five publications:

Agricultural Commodities, Australia (cat. no. 7121.0) contains detailed statistics on land use, crop and horticultural area and production, livestock numbers and farm management and demographic information. The publication presents data on a national, state and territory basis. Sub-state level data, including Australian Statistical Geography Standard (ASGS) Statistical Area 4 (SA4) and Statistical Area 2 (SA2) levels and Natural Resource Management (NRM) regions, will be released in data cubes attached to the publication at a later date.

Water Use on Australian Farms (cat. no. 4618.0) contains detailed statistics on agricultural water use and sources of water, including details of pastures and crops irrigated, expense of irrigation and volume of water applied. The publication presents data on a national, state and territory basis. Sub-state level data, including ASGS SA4, SA2 and NRM regions and the Murray-Darling Basin region, will be released in data cubes attached to the publication at a later date.

Land Management and Farming in Australia (cat. no. 4627.0) provides information on a variety of management practices being adopted by Australian agricultural businesses including cropping and pasture management, soil management and fertiliser use. Data are presented at the Australian, State and Australian Agricultural Environment (AAE) regional levels.

Value of Agricultural Commodities Produced, Australia (cat. no. 7503.0) presents value of production statistics. It contains detailed statistics on the gross and local values of crops, livestock slaughters and disposals, and livestock products. The publication presents data on national, and on state and territory basis. Sub-state level data, including ASGS SA4, SA2 and NRM regions, will be released in data cubes attached to the publication at a later date.

Gross Value of Irrigated Agricultural Production (cat. no. 4610.0.55.008) presents the gross value of agricultural commodities that are produced with the assistance of irrigation. The publication presents data on a national, state and territory basis, NRM region and Murray-Darling Basin region.

TIMELINESS

Agricultural Commodities, Australia (cat. no. 7121.0), Value of Agricultural Commodities Produced, Australia (cat. no. 7503.0) and Water Use on Australian Farms (cat. no. 4618.0) will be published in July 2017. Land Management and Farming in Australia (cat. no. 4627.0) is scheduled for release in August 2017 and Gross Value of Irrigated Agricultural Production (cat. no. 4610.0.55.008) will be published in late 2017.

Preliminary data presenting principal crops and livestock numbers and gross values of production for principal agricultural commodities for the 2015–16 reference period were released in the publications Principal Agricultural Commodities, Australia, Preliminary (cat. no. 7111.0) and Value of Principal Agricultural Commodities Produced, Australia, Preliminary (cat. no. 7501.0) respectively, in January 2017.

ACCURACY

Data from the 2015–16 Agricultural Census are based on the achieved target response rate of 85% and have been extensively quality assured. The resultant estimates have been checked against earlier years' estimates and relevant other sources, to ensure the accuracy of estimates produced.

All estimates in this publication are subject to sampling error. For more information about these errors, refer to the Explanatory Notes within this release.

COHERENCE

The 2015-16 Agricultural Census was conducted using a frame based on the Australian Business Register (ABR). This is the same as the frame used for the 2005-06 Agricultural Census, for subsequent annual agricultural surveys, and for the 2010-11 Agricultural Census.

For the purposes of this collection a business (statistical unit) is identified as undertaking agricultural activity if any of the primary or secondary productive activities of that business fall with the Agriculture Subdivision (Subdivision 01) as defined by the 2006 edition of the Australian and New Zealand Standard Industrial Classification (ANZSIC). For more information, please refer to Australian and New Zealand Standard Industrial Classification (ANZSIC), 2006 (cat. no. 1292.0).

As noted in the publication Agricultural Census: Nature and Content, 2015-16 (cat. no 7100.1), the scope for the 2015-16 Agricultural Census was all agricultural businesses with an EVAO of \$40,000 or greater. This is a change from previous ABS Rural Environment and Agricultural Collections, where a scope of EVAO of \$5,000 or greater was used. The change in scope better aligns this collection with contemporary definitions of an agricultural business and reduces the overall reporting load for smaller agricultural businesses. It is proposed that only agricultural businesses with an EVAO of \$40,000 or greater will be in scope for ABS rural environmental and agricultural commodity collections in 2016-17 and beyond. For more information about EVAO, refer to the Explanatory Notes within this release.

As a result of the change in scope, the estimates from the 2015-16 Agricultural Census will not be directly comparable to previous published Agricultural Censuses or annual Rural Environment and Agricultural Commodity Survey outputs. To address this, additional estimates have been produced from a number of rural environment and agricultural commodity collections from 2010-11 to 2014-15 using an EVAO of \$40,000 or greater. These estimates are now available at the national, state/territory levels and sub-state levels on the ABS website.

INTERPRETABILITY

The Agricultural Census and the Rural Environment and Agricultural Commodities Survey provide a broad range of data about Australian agricultural commodities through a suite of standard products or as data customised for individual requirements. Time series data are available for some estimates that were collected through previous surveys/censuses. Detailed explanatory notes are provided with each publication to assist users in determining and specifying their data requirements and to understand the concepts underlying the data.

ACCESSIBILITY

An extensive range of data is available from a variety of agriculture-based collections on the ABS website.

If the information you require is not available as a standard product or service, the ABS Consultancy Services can assist with customised services to suit your requirements. Inquiries should be made to the National Information and Referral Service on 1300 135 070.

© Commonwealth of Australia

All data and other material produced by the Australian Bureau of Statistics (ABS) constitutes Commonwealth copyright administered by the ABS. The ABS reserves the right to set out the terms and conditions for the use of such material. Unless otherwise noted, all material on this website – except the ABS logo, the Commonwealth Coat of Arms, and any material protected by a trade mark – is licensed under a Creative Commons Attribution 2.5 Australia licence



Australian Bureau of Statistics

7503.0 - Value of Agricultural Commodities Produced, Australia, 2015-16

Previous ISSUE Released at 11:30 AM (CANBERRA TIME) 07/07/2017

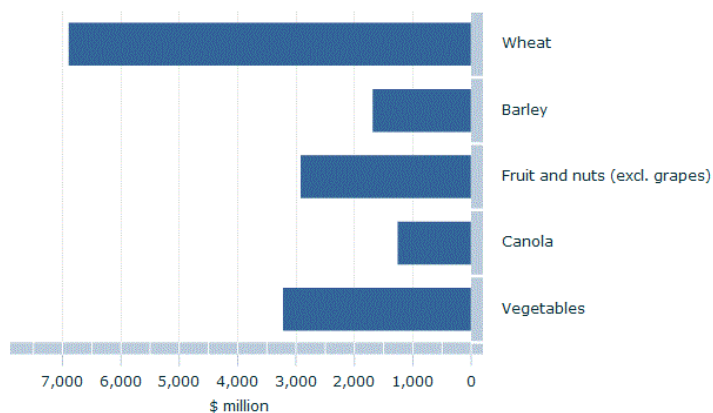
Summary

Main Features

KEY FIGURES

VALUE OF AGRICULTURAL COMMODITIES PRODUCED, Australia, year ended 30 June 2016

	Value	Change in value since
	\$m	2014-15
		%
CROPS		
Wheat	6 170.1	-12.1
Oats	397.9	39.4
Barley	2 276.6	-3.8
Sorghum	491.6	-23.4
Rice	114.8	-55.9
Cotton lint (irrigated and non-irrigated)	1 340.0	41.7
Canola	1 475.7	-16.7
Sugar cane cut for crushing	1 283.2	0.5
Nurseries, cut flowers and cultivated turf	1 296.3	7.0
Fruit and nuts (excl. grapes)	4 224.6	25.3
Grapes (total)	1 333.9	27.2
Vegetables	3 585.4	9.3
<i>Total crops</i>	<i>27 341.6</i>	<i>5.0</i>
LIVESTOCK SLAUGHTERINGS AND OTHER DISPOSALS		
Cattle and calves	13 086.8	13.5
Sheep and lambs	3 239.4	-1.7
Pigs	1 353.1	17.8
Poultry	2 748.4	5.3
Other livestock	194.8	26.3
<i>Total livestock slaughterings and other disposals</i>	<i>20 622.5</i>	<i>10.0</i>
LIVESTOCK PRODUCTS		
Wool	2 964.9	10.8
Milk	4 282.2	-9.3
Eggs	782.8	7.9
<i>Total livestock products</i>	<i>8 029.9</i>	<i>-1.2</i>
Total agriculture	55 994.0	5.8

Crops
 2010-11


■ Gross value

Select a different graph

Crops, Australia

Controls

2010-11 2011-12 2012-13 2013-14 2014-15 2015-16

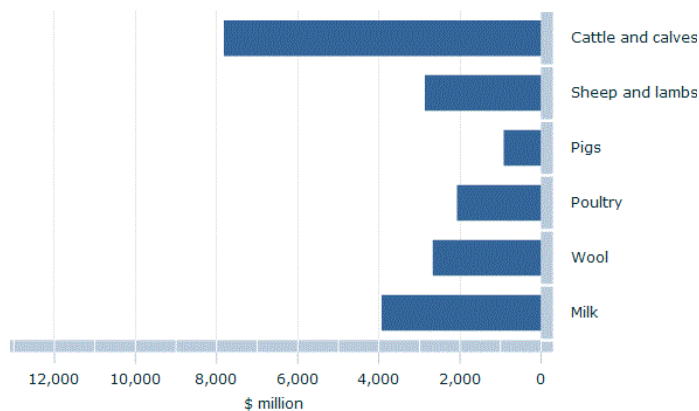
Play Stop Reset Full Screen Save Chart Image

Australian Bureau of Statistics

© Commonwealth of Australia 2017.

Footnote(s): Due to confidentiality restrictions some data may not be published. See Explanatory Notes for more information.

Source(s): Value of Agricultural Commodities Produced, Australia, 2015-16

Livestock slaughterings & other disposals & livestock products
 2010-11


■ Gross value

Select a different graph

Livestock slaughterings and products, Australia

Controls

2010-11 2011-12 2012-13 2013-14 2014-15 2015-16

Play Stop Reset Full Screen Save Chart Image

Australian Bureau of Statistics

© Commonwealth of Australia 2017.

Footnote(s): Due to confidentiality restrictions some data may not be published. See Explanatory Notes for more information.

Source(s): Value of Agricultural Commodities Produced, Australia, 2015-16

KEY POINTS

- The gross value of Australian agriculture increased by \$3.1 billion to \$56 billion in 2015-16, with all states except Northern Territory showing an increase. Queensland was the highest contributing state with an increase of 12%, driven by an increase in livestock disposals (up 14%) and total value of crops (up 11%).
- Nationally, the gross value of livestock slaughterings and other disposals increased by \$1.9 billion to \$20.6 billion in 2015-16. The gross value of crop production also increased (up 5%) from \$26.0 billion in 2014-15 to \$27.3 billion in 2015-16.
- The gross value of cattle and calves in Australia has increased by 13% to \$13.1 billion in 2015-16, largely driven by higher slaughter returns. Queensland is the largest contributor being 45% of the national total, followed by New South Wales contributing 20%.
- These increases are offset by a 3% decrease to \$15.4 billion for total broadacre crops, reflecting poor cropping conditions prevailing during 2015-16 in southern Australia in particular.

About this Release

This publication contains final estimates of gross and local values of production of major agricultural commodities for Australia, states and territories. Additional commentary for Australia, states and territories and datacubes for sub-state levels will be released at a later date.

History of changes

This document was added or updated on 28/07/2017.

30/10/2018 This release contains gross value of agricultural commodity data at Local Government Area level and a geopackage.

1/11/2017

This release contains data previously not available for release at SA4 and NRM level.

31/10/2017

Additional information for Value of Agricultural Commodities Produced, Australia, 2015-16 is now available. Small area datacubes which include national, state/territory, Australian Statistical Geography Standard (ASGS) Statistical Area 2 (SA2) region estimates are now available for download.

28/07/2017

A correction to the value of milk in 2013-14 has been made in the Data Cube. In addition, an incorrect unit of measure for the gross value of cattle and calves in Australia has been replaced.

The value of agricultural production continues to rise (Media Release)

7 July 2017

MEDIA RELEASE
Embargo: 11.30am (Canberra Time)

83/2017

The value of agricultural production continues to rise

The total value of Australia's agricultural production continues to rise, breaking another record during the 2015-16 year and peaking at \$56 billion, according to Agricultural Census data released today by the Australian Bureau of Statistics (ABS).

ABS Director of Environment and Agriculture Statistics, Lauren Binns said the growth in the value of Australia's agricultural production in 2015-16 had again been driven by increases in the value of livestock products.

"The value of Australia's livestock disposals continues to increase, up 10 per cent to \$20.6 billion compared to 2014-15," Ms Binns said. "Beef was again the largest contributor to this rise, despite fewer animals heading to the saleyards, with strong price rises both domestically and internationally."

Data collected from around 104,000 businesses ranging from beef cattle production to broadacre farming and vineyards has produced a picture of Australia's agricultural sector.

The Agricultural Census also showed that the most valuable crop types were wheat (\$6.2 billion), fruit, nuts and grapes (\$5.6 billion) and vegetables (\$3.6 billion).

Results were mixed for broadacre cropping.

"Nationally, the gross value of broadacre crops decreased by 4.8 per cent to \$15.4 billion. Most states recorded decreases, with Victoria and South Australia in particular down 28.5 per cent and 22.8 per cent respectively.

The ABS greatly appreciates the support of the agricultural sector in supplying this data and our government and industry partners for their input to the production of these statistics.

Further details can be found in Value of Agricultural Commodities Produced, Australia (2014-15) (cat. no 7503.0) available for free download from the ABS website www.abs.gov.au

Media note:

· Media contact: For more information and interview opportunities, phone 1300 175 070 or email media@abs.gov.au

Explanatory Notes

Explanatory Notes

EXPLANATORY NOTES

INTRODUCTION

1 This publication contains final estimates from the 2015–16 Value of Agricultural Commodities Produced (VACP) collection. Included are statistics on gross and local values of crops, livestock disposals and livestock products.

2 National and state/territory level estimates are presented in this release. Data at sub-state levels including Australian Statistical Geography Standard (ASGS) (2011 edition) Statistical Area 4 (SA4), Statistical Area 2 (SA2) and Natural Resource Management (NRM) regions will be released as data cubes (Excel xls), zipped Excel files and comma separated value (csv) files attached to the publication.

CALCULATING VACP

3 VACP has three major categories:

- The value of crop production
- The value of livestock disposals (including domestic slaughtering and export of live animals)
- The value of livestock products (including wool, eggs and whole milk)

4 The gross value estimates in this publication are derived by the multiplication of price and quantity estimates of agricultural commodities.

5 Quantity data for most crops have been sourced from the 2015–16 Agricultural Census and relate to the year ended 30 June 2016. Remaining commodity data (livestock disposals and livestock products excluding eggs) are obtained from other Australian Bureau of Statistics (ABS) collections, with some information from non-ABS sources. A copy of the 2015–16 survey form can be found in Agricultural Commodities, Australia (cat. no. 7121.0), under the Downloads tab.

6 Gross prices are those realised at the point(s) of valuation where ownership of the commodity is relinquished by the agricultural sector. For example, fruit can be sold into the fresh fruit market, to factories for processing and/or export.

Example: Calculating gross value for Banana production in Australia:

Market	Production quantity (tonnes)	Average market price (\$)	Market value (\$)
--------	------------------------------	---------------------------	-------------------

Fresh fruit	5	1,000	5,000
Factory input	30	200	6,000
Overseas exports	15	1200	18,000
Total (all markets)	50	derived price 580	Gross value 29,000

Each market value is calculated by multiplying the production quantity data by the average market price. The gross value of bananas is \$29,000, the sum of the market values for fresh, factory input and exports.

7 The Local value estimates in this publication are derived by subtracting transport and marketing costs from gross value. They are the value placed on recorded production at the place of production, including indirect taxes.

8 Transport and marketing costs are the costs of moving the agricultural product from the place of production (i.e. farm) to the market place. These include freight, cost of containers, commission, insurance, storage, handling and other charges necessarily incurred by the producer in delivering commodities to the market place.

COLLECTION METHOD

9 Price information is obtained from other ABS collections, as well as from non-ABS sources, including marketing authorities and industry sources.

10 The method of collection of relevant prices and the costs of marketing for agricultural commodities varies considerably between states and territories and between commodities. Where a statutory authority handles marketing of the whole or a portion of a product, data are usually obtained from this source. Information is also obtained from marketing reports, wholesalers, brokers and auctioneers. For all commodities values are in respect of production during the year (or season) irrespective of when payments are made. For that portion of production not marketed estimates are made from the best available information and, in general, are calculated on a local value basis.

SCOPE CHANGES IN THE AGRICULTURAL CENSUS

11 As noted in the publication Agricultural Census: Nature and Content, 2015-16 (cat. no 7100.1), the scope for the 2015-16 Agricultural Census was all agricultural businesses with an Estimated Value of Agricultural Operations (EVAO) of \$40,000 or greater. This is a change from previous ABS Rural Environment and Agricultural Collections, where a scope of EVAO of \$5,000 or greater was used. The change in scope better aligns this collection with contemporary definitions of an agricultural business and reduces the overall reporting load for smaller agricultural businesses. It is proposed that only agricultural businesses with an EVAO of \$40,000 or greater will be in scope for ABS rural environmental and agricultural commodity collections in 2016-17 and beyond.

12 The scope change impacts on some components of VACP but not others. Where information is sourced from the Agricultural Census there will be an impact on estimates, including for crops and horticulture where production information is now only collected from businesses with a value of agricultural operations of \$40,000 or greater. The value of livestock disposals and livestock products (except for eggs) is sourced from other information and is not impacted by the Agricultural Census scope change.

13 As a result of the change in scope, some components of VACP will not be directly comparable to previous published VACP outputs. To address this, additional estimates have been produced for a number of VACP releases from 2010-11 to 2014-15 using an EVAO of \$40,000 or greater. These estimates are now available at the national, state/territory levels and sub-state levels on the ABS website.

RELIABILITY OF ESTIMATES (SAMPLE ERROR)

14 The estimates in this publication that are based on information obtained from agricultural businesses that responded to the 2015-16 Agricultural Census are subject to sampling variability. Not all of the businesses that were selected for the 2015-15 Agricultural Census provided data, and therefore estimates may differ from the figures that would have been produced if information had been collected from all businesses.

15 One measure of the likely difference is given by the standard error (SE) which indicates the extent to which an estimate might have varied by chance because only a sample was taken or received. There are approximately two chances in three that a 'sample' estimate will differ by less than one SE from the figure that would have been obtained if all establishments had responded or been reported for, and approximately 19 chances in 20 that the difference will be less than two SEs.

16 In this publication, 'sampling' variability of the estimates is measured by the relative standard error (RSE) which is obtained by expressing the SE as a percentage of the estimate to which it refers. Most published estimates have RSEs less than 10%. For some states and territories with limited production of certain commodities, RSEs are greater than 10%. Estimates that have an estimated RSE between 10% and 25% should be used with caution as they are subject to sampling variability too high for some purposes. Estimates with an RSE between 25% and 50% should also be used with caution as they are subject to sampling variability too high for most practical purposes. Estimates with an RSE greater than 50% are considered too unreliable for general use.

17 RSEs for all published estimates are available on request.

ROUNDING AND CONFIDENTIALITY

18 Where figures for individual states or territories have been suppressed for reasons of confidentiality, they have been included in relevant totals.

19 Where figures have been rounded, discrepancies may occur between sums of the component items and totals.

RELATED PUBLICATIONS

20 Final estimates of agricultural commodity data are available at the same time as the final 2015-16 VACP estimates. These estimates are located in Agricultural Commodities, Australia (cat. no. 7121.0).

21 Current publications and other products released by the ABS are listed under the **Statistics** page on the ABS website. The ABS also issues a daily Release Advice on the website which details products to be released in the week ahead.

ABS DATA AVAILABLE ON REQUEST

22 As well as the statistics included in this and related publications, the ABS may have other relevant data available on request. Inquiries should be

made to the National Information and Referral Service on 1300 135 070.

GENERAL ACKNOWLEDGEMENT

23 ABS publications draw extensively on information provided freely by individuals, businesses, governments and other organisations. Their continued cooperation is very much appreciated. Without it, the wide range of statistics published by the ABS would not be available. Information received by the ABS is treated in strict confidence as required by the **Census and Statistics Act 1905**.

PRIVACY

24 The ABS Privacy Policy outlines how the ABS will handle any personal information that you provide to the ABS.

Abbreviations

ABBREVIATIONS

\$m	million dollars
AAE	Australian Agricultural Environment
ABARES	Australian Bureau of Agricultural and Resource Economics and Sciences
ABS	Australian Bureau of Statistics
ACT	Australian Capital Territory
ASGS	Australian Statistical Geography Standard
Aust.	Australia
cat. no.	catalogue number
csv	comma separated values file
EVAO	Estimated Value of Agricultural Operations
excl.	excluding
np	not published
NRM	Natural Resource Management
NSW	New South Wales
NT	Northern Territory
Qld.	Queensland
REACS	Rural Environment and Agricultural Commodities Survey
RSE	relative standard error
SA	South Australia
SA2	Statistical Area 2
SA4	Statistical Area 4
SE	standard error
Tas.	Tasmania
VACP	Value of Agricultural Commodities Produced
Vic.	Victoria
WA	Western Australia
xls	Microsoft Excel spreadsheet file

Quality Declaration

QUALITY DECLARATION — SUMMARY

INSTITUTIONAL ENVIRONMENT

For information on the institutional environment of the Australian Bureau of Statistics (ABS), including the legislative obligations of the ABS, financing and governance arrangements, and mechanisms for scrutiny of ABS operations, please see ABS Institutional Environment.

RELEVANCE

This publication contains final estimates from the 2015-16 Value of Agricultural Commodities Produced (VACP) Collection. The value estimates in this publication are derived by the multiplication of price and quantity of agricultural commodities. Price data refer to the average unit value of a given commodity realised in the marketplace. Price information is obtained from ABS collections, as well as from non-ABS sources, including marketing authorities and industry sources.

Quantity data for crops has been collected via the 2015-16 Agricultural Census. Remaining commodity data are obtained from other ABS collections, with some information gathered from external sources. The data are collected on a state/territory basis and then aggregated to derive Australian totals.

Final estimates from the 2015–16 Agricultural Census will be presented in five publications:

Agricultural Commodities, Australia (cat. no. 7121.0) contains detailed statistics on land use, crop and horticultural area and production, livestock numbers and farm management and demographic information. The publication presents data on a national, state and territory basis. Sub-state level data, including Australian Statistical Geography Standard (ASGS) Statistical Area 4 (SA4) and Statistical Area 2 (SA2) levels and Natural Resource Management (NRM) regions, will be released in data cubes attached to the publication at a later date.

Water Use on Australian Farms (cat. no. 4618.0) contains detailed statistics on agricultural water use and sources of water, including details of pastures and crops irrigated, expense of irrigation and volume of water applied. The publication presents data on a national, state and territory basis. Sub-state level data, including ASGS SA4, SA2 and NRM regions and the Murray-Darling Basin region, will be released in data cubes attached to the publication at a later date.

Land Management and Farming in Australia (cat. no. 4627.0) provides information on a variety of management practices being adopted by Australian agricultural businesses including cropping and pasture management, soil management and fertiliser use. Data are presented at the Australian, State and Australian Agricultural Environment (AAE) regional levels.

Value of Agricultural Commodities Produced, Australia (cat. no. 7503.0) presents value of production statistics. It contains detailed statistics on the gross and local values of crops, livestock slaughters and disposals, and livestock products. The publication presents data on national, and on state and territory basis. Sub-state level data, including ASGS SA4, SA2 and NRM regions, will be released in data cubes attached to the publication at a later date.

Gross Value of Irrigated Agricultural Production (cat. no. 4610.0.55.008) presents the gross value of agricultural commodities that are produced with the assistance of irrigation. The publication presents data on a national, state and territory basis, NRM region and Murray-Darling Basin region.

TIMELINESS

Agricultural Commodities, Australia (cat. no. 7121.0), Value of Agricultural Commodities Produced, Australia (cat. no. 7503.0) and Water Use on Australian Farms (cat. no. 4618.0) will be published in July 2017. Land Management and Farming in Australia (cat. no. 4627.0) will be released in August 2017 and Gross Value of Irrigated Agricultural Production (cat. no. 4610.0.55.008) will be published in late 2017.

Preliminary data presenting principal crops and livestock numbers and gross values of production for principal agricultural commodities for the 2015–16 reference period were released in the publications Principal Agricultural Commodities, Australia, Preliminary (cat. no. 7111.0) and Value of Principal Agricultural Commodities Produced, Australia, Preliminary (cat. no. 7501.0) respectively, in January 2017.

ACCURACY

The accuracy of price data is ensured by the collection of price data from the best known sources. Where a statutory authority handles marketing of the whole or a portion of a product, data are usually obtained from this source. Information is also obtained from marketing reports, wholesalers, brokers, dealers and auctioneers. Production data are obtained from a range of high-quality sources, including ABS agricultural commodity collections and industry bodies. Extensive editing of production and prices data and checking of resultant value estimates against earlier years and other relevant sources are used to ensure the accuracy of the estimates produced.

All estimates in this publication are subject to sampling error. For more information about these errors, refer to the Explanatory Notes within this release.

COHERENCE

As noted in the publication Agricultural Census: Nature and Content, 2015-16 (cat. no 7100.1), the scope for the 2015-16 Agricultural Census was all agricultural businesses with an Estimated Value of Agricultural Operations (EVAO) of \$40,000 or greater. This is a change from previous ABS Rural Environment and Agricultural Collections, where a scope of EVAO of \$5,000 or greater was used. The change in scope better aligns this collection with contemporary definitions of an agricultural business and reduces the overall reporting load for smaller agricultural businesses. It is proposed that only agricultural businesses with an EVAO of \$40,000 or greater will be in scope for ABS rural environmental and agricultural commodity collections in 2016-17 and beyond. For more information about EVAO, refer to the Explanatory Notes within this release.

The scope change impacts on some components of VACP but not others. Where information is sourced from the Agricultural Census there will be an impact on estimates, including for crops and horticulture where production information is now only collected from businesses with a value of agricultural operations of \$40,000 or greater. The value of livestock disposals and livestock products (except for eggs) is sourced from other information and is not impacted by the Agricultural Census scope change.

As a result of the change in scope, some components of VACP will not be directly comparable to previous published VACP outputs. To address this, additional estimates have been produced for a number of VACP releases from 2010-11 to 2014-15 using an EVAO of \$40,000 or greater. These estimates are now available at the national, state/territory levels and sub-state levels on the ABS website.

INTERPRETABILITY

The VACP Collection provides a broad range of data about the value of agricultural commodities produced in Australia through a suite of standard products or as data customised for individual requirements. Detailed Explanatory Notes are provided in Value of Principal Agricultural Commodities Produced, Australia, 2015-16 (cat. no. 7503.0) to assist users in determining and specifying their data requirements and to understand the concepts underlying the data.

ACCESSIBILITY

An extensive range of data is available from a variety of agriculture-based collections on the ABS website.

If the information you require is not available as a standard product or service, the ABS Consultancy Services can assist with customised services to suit your requirements. Inquiries should be made to the National Information and Referral Service on 1300 135 070.



Australian Bureau of Statistics

4618.0 - Water Use on Australian Farms, 2015-16

Previous ISSUE Released at 11:30 AM (CANBERRA TIME) 07/07/2017

Summary

Main Features

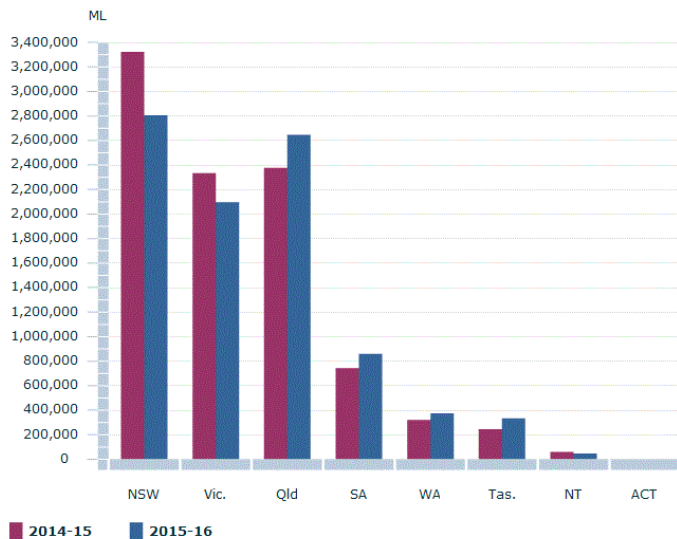
KEY FIGURES

WATER USE ON AUSTRALIAN FARMS, year ended 30 June 2016

	Aust.	NSW	Vic.	Qld	SA	WA	Tas.	NT	ACT	MDB ^a
AGRICULTURAL WATER USE										
Agricultural businesses ('000)	85.7	26.1	20.8	18.2	9.5	8.4	2.3	0.4	0.0	35.5
Agricultural businesses irrigating ('000)	22.7	5.3	6.0	5.4	3.1	1.5	1.2	0.2	0.0	9.2
Total water use ('000 ML) (b)	9 157.3	2 805.3	2 095.0	2 646.1	858.8	372.6	332.1	47.0	0.3	5 209.9
Water applied for irrigation ('000 ML) (c)	8 381.4	2 610.9	1 946.1	2 433.5	777.8	287.5	308.7	16.9	0.1	4 938.4
Water applied for other agricultural purposes ('000 ML) (d)	775.9	194.5	148.8	212.6	81.0	85.1	23.5	30.1	0.3	271.6
Change in total water use from 2014-15 (%)	-2.5	-15.5	-10.2	11.3	15.8	16.7	36.6	-21.9	32.5	-12.6
SOURCES OF AGRICULTURAL WATER										
Irrigation channels or pipelines ('000 ML)	3 096.2	965.7	1 067.7	789.2	117.9	101.2	53.2	1.3	0.0	2 087.6
On-farm dams or tanks ('000 ML)	980.1	228.6	103.1	410.5	20.1	87.6	126.4	3.6	0.2	438.5
Rivers, creeks or lakes ('000 ML)	2 412.5	885.2	540.0	610.1	231.4	14.1	124.0	7.5	0.1	1 656.4
Groundwater ('000 ML)	2 357.2	675.5	292.3	761.7	432.3	141.6	19.3	34.4	0.0	926.2
Recycled/re-used from off-farm ('000 ML)	161.0	23.3	49.9	57.3	11.3	15.6	3.6	0.0	0.0	56.2
Town or country reticulated mains supply ('000 ML)	126.5	21.3	37.5	8.8	43.6	11.8	3.4	0.1	0.0	35.6
Other water sources ('000 ML)	23.8	5.7	4.5	8.4	2.2	0.7	2.2	0.0	0.0	9.5

- (a) Murray Darling Basin (MDB)
- (b) Includes water applied for irrigation and other agricultural purposes
- (c) Includes water applied to pastures and crops
- (d) Includes livestock drinking water, dairy or piggery cleaning etc.

Agricultural water use



Select a different graph

Total Water Use, State and Territory (a)

Save Chart Image

Australian Bureau of Statistics

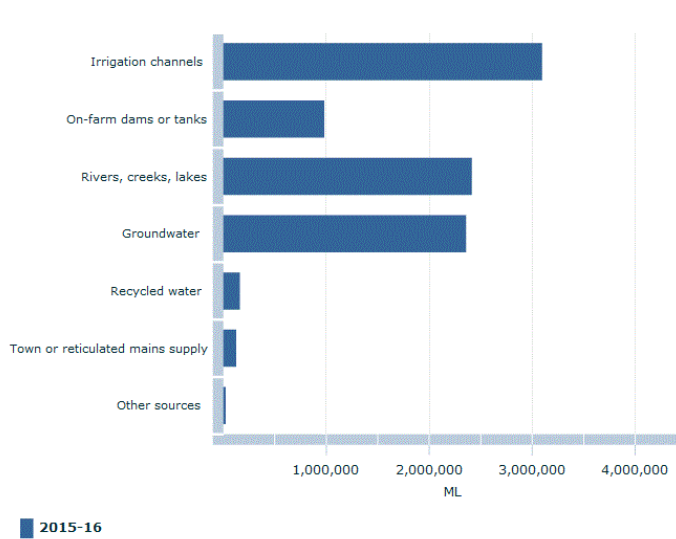
© Commonwealth of Australia 2017.

Annotation(s): MDB=Murray-Darling Basin

Footnote(s): (a) Includes water applied for irrigation and other agricultural purposes;(b) Includes water applied to pastures and crops;(c) Includes livestock drinking water, dairy or piggery cleaning etc.

Source(s): Water Use on Australian Farms, 2014-15

Sources of Agricultural Water



Select a different graph

Sources of Agricultural Water, Australia

Save Chart Image

Australian Bureau of Statistics

© Commonwealth of Australia 2017.

Annotation(s): MDB=Murray-Darling Basin

Source(s): Water Use on Australian Farms, 2015-16

KEY POINTS

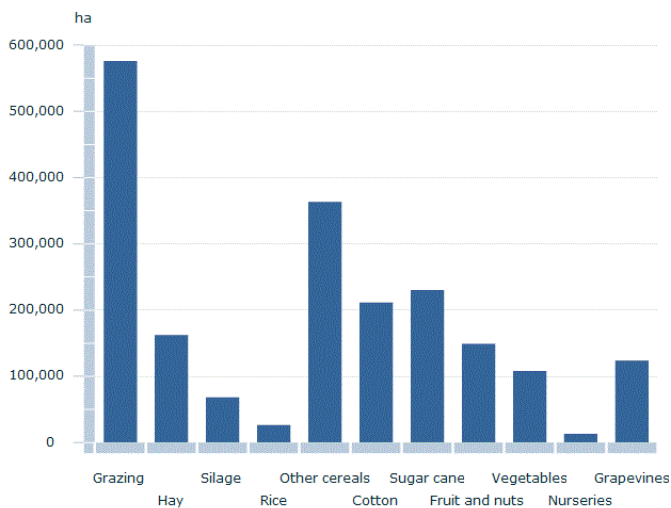
- 2015-16 was a generally warm, dry year for Australia with above average temperatures and low rainfall, particularly in Victoria and South Australia. This affected the amount of water available in dams and tanks as well as limiting water allocations in a number of regions.
- Total water use on Australian farms decreased 3% in 2015-16, to a total of 9.2 million megalitres, down 238,900 megalitres on 2014-15.
- The volume of water used for irrigation also decreased between 2014-15 and 2015-16, down 3% to 8.4 megalitres with the number of businesses irrigating decreasing at a higher rate, down (18%) to 22,700 businesses.
- The decrease in businesses irrigating is particularly prominent in New South Wales with the number of irrigating businesses falling 21% (down to 5,300), driven by sales of water allocations. Victoria experienced the same level of decrease, dropping to 6,000 businesses reporting irrigation, driven by a 5% decrease in the area under crop.
- The Murray Darling Basin accounted for 57% of the nation's total water used for irrigation in 2015-16. Agricultural businesses in the Murray Darling Basin region used 4.9 million megalitres of water to irrigate 1.2 million hectares of crops and pastures during 2015-16. The area irrigated in the Murray Darling Basin account for 58% of the nation's total area watered.
- While decreasing 23% in volume in 2015-16, water sourced from irrigation channels or pipelines remained the largest source of water for agricultural purposes, with 34% (or 3.1 million megalitres) of total water used coming from this source.

Irrigation Activity by Commodity

WATER USE ON AUSTRALIAN FARMS, year ended 30 June 2016

	PASTURES AND CROPS IRRIGATED AUSTRALIA					
	Agricultural businesses no.	Agricultural businesses irrigating no.	Area under pasture or crop ha '000	Area watered ha '000	Volume applied ML '000	Application rate ML/ha
TOTAL						
2010-11	93 344	28 463	388 994	1 838	6 326	3.4
2014-15	84 729	27 808	365 913	2 056	8 645	4.2
2015-16	85 681	22 690	371 078	2 148	8 381	3.9
Pasture, cereal and other crops used for grazing	61 391	6 425	312 224	576	1 671	2.9
Pasture, cereal and other crops cut for hay	24 095	3 364	1 775	162	532	3.3
Pasture, cereal and other crops cut for silage	5 958	1 249	401	68	176	2.6
Rice	335	335	27	26	317	12.1
Other cereals for grain or seed	25 053	2 026	16 928	363	687	1.9
Cotton	684	633	280	211	1 432	6.8
Sugar cane	3 341	1 839	447	230	1 296	5.6
Other broadacre crops	12 388	988	4 330	96	220	2.3
Fruit trees, nut trees, plantation or berry fruits	4 982	4 093	170	149	967	6.5
Vegetables for human consumption or seed	3 741	3 182	118	108	429	4.0
Nurseries, cut flowers and cultivated turf	1 880	1 625	15	13	60	4.6
Grapevines	3 749	3 377	136	123	504	4.1

Irrigation Activity by Commodity



■ 2015-16

Select a different graph

Area Irrigated by Commodity, Australia ▼

Save Chart Image

Australian Bureau of Statistics

© Commonwealth of Australia 2017.

KEY POINTS

- Nationally, the number of agricultural businesses irrigating decreased 18% to 22,700. New South Wales, Victoria and South Australia all fell by 21%, driven largely by decreases in areas for cropping particularly for rice, wheat, sorghum and canola. Reduced water allocations also contributed to the decline.
- Pasture, cereal and other crops for grazing accounted for the largest area of crops irrigated during the 2015-16 period with 575,700 hectares, down 10% from the previous year. This decrease was primarily driven by a large fall in Victoria, down 19% to 346,500 hectares.
- Both the area irrigated and volume of water applied increased noticeably for cotton in 2015-16. Nationally the area irrigated increased from 160,500 hectares to 211,300 hectares (up 32%) and volume of water applied increased 20% from 1.2 million to 1.4 million megalitres. New South Wales continues to be main contributing state, reporting large increases due to farmers switching from growing rice to cotton in 2015-16.
- Other increases in volumes applied were sugar cane (up 17%) and fruit and nuts (up 38%). These increases were offset by decreases in volume applied for pastures and cereals for grazing or fed off (down 23%), other cereal crops (down 15%) and rice (down 63%).

About this Release

This publication presents final estimates of agricultural water use (including pastures and crops irrigated), irrigation water sources and irrigation expenditure. Estimates are presented at Australia, state and territories levels. Additional datacubes for sub-state levels including the Murrumbidgee Basin will be released at a later date.

History of changes

This document was added or updated on 31/07/2017.

30/10/2018 This release contains water data at Local Government Area level and a geopackage.

1/11/2017 This release contains data previously not available for release at SA4 and NRM level.

31/10/2017 Additional information for Water Use on Australian Farms, 2015-16 is now available. Small area datacubes which include national, state/territory, Australian Statistical Geography Standard (ASGS) Statistical Area 2 (SA2) are now available for download.

31/07/2017 Additional information for Water Use on Australian Farms, 2015-16 is now available. Small area datacubes which include national, state/territory, Australian Statistical Geography Standard (ASGS) Statistical Area 4 (SA4) and Natural Resource Management (NRM) region estimates are now available for download.

Regional conditions influence agricultural water use (Media Release)

7 July 2017

MEDIA RELEASE
Embargo: 11.30am (Canberra Time)

81/2017

Regional conditions influence agricultural water use

Differences in regional climatic conditions appear to be influencing the use of water on Australian farms, according to Agricultural Census data released by the Australian Bureau of Statistics (ABS) today.

ABS Director of Environment and Agriculture Statistics, Lauren Binns said farmers were modifying their practices to adjust to water availability and climatic conditions.

"This includes selling off allocations to recoup costs rather than cropping in a bad year, watering larger areas less, or changing crops planted.

"The above average temperatures and dry conditions in southern Australia through 2015-16, along with record high prices for water, were critical factors in water use for Victoria and South Australia in particular.

"The Agricultural Census data showed that while the total volume of water used in 2015-16 decreased by 3 per cent to 9,157,291 megalitres, the total area watered across Australia increased by 4 per cent to 2,147,915 hectares," Ms Binns said.

Across Australia, the Agricultural Census surveyed around 104,000 agricultural businesses. It is the ABS' largest business collection and one of the major sources of information about the Australian agricultural industry.

The ABS greatly appreciates the support of the agricultural sector in supplying this data and our government and industry partners for their input to the production of these statistics.

Further details are available in Water use on Australian farms (2015-16) (cat. no. 4618.0).

Media note:

· Media contact: For more information and interview opportunities, phone 1300 175 070 or email media@abs.gov.au

Explanatory Notes

Explanatory Notes

EXPLANATORY NOTES

INTRODUCTION

1 This publication contains final estimates for data items relating to water collected in the 2015-16 Agricultural Census. Included are statistics on water use, water sources, irrigation expenditure and irrigation methods.

2 National and state/territory level estimates are presented in this release. Data at sub-state levels including Australian Statistical Geography Standard (ASGS) (2011 edition) Statistical Area 4 (SA4), Statistical Area 2 (SA2), Natural Resource Management (NRM) regions and the Murray Darling Basin region will be released as data cubes (Excel xls), zipped Excel files and comma separated value (csv) files attached to the publication.

3 The Agricultural Census is conducted once every five years, with the Rural Environment and Agricultural Commodity Survey (REACS) conducted annually in the intervening years. The main purpose of the Agricultural Census is to provide benchmark information on the agriculture industry for small geographic areas.

4 Estimates in this publication were compiled from information obtained from the Agricultural Census for the financial year ended 30 June 2016. Administrative data from non-Australian Bureau of Statistics (ABS) sources was also used to supplement reported data. A copy of the 2015-16 Census form can be found under the Downloads tab of this publication.

SCOPE AND COVERAGE

5 The scope of the 2015-16 Agricultural Census was all businesses undertaking agricultural activity recorded on the Australian Bureau of Statistics' Business Register (ABSR) above a minimum threshold applied to the estimated value of their agricultural operations.

6 For the purposes of the Agricultural Census a business (statistical unit) is identified as undertaking agricultural activity if any of the primary or secondary productive activities of that business fall within the Agriculture Subdivision (Subdivision 01) as defined by the 2006 edition of the Australian and New Zealand Standard Industrial Classification (ANZSIC). For more information, please refer to Australian and New Zealand Standard Industrial Classification (ANZSIC), 2006 (cat. no. 1292.0).

7 The ABSR is based on the Australian Business Register (ABR). Most businesses and organisations in Australia are required to obtain an Australian Business Number (ABN) from the Australian Taxation Office (ATO) for their business operations. The ABR stores details about businesses and organisation when they register for an ABN.

8 Estimated Value of Agricultural Operations (EVAO) was used to determine whether an agricultural business operation was in-scope for the 2015-16 Agricultural Census. EVAO is an ABS construct used to estimate the relative size of agricultural activity undertaken by a business. Three-year average weighted prices are applied to livestock sales and livestock numbers on the farm, and to area and production data for crops. The resultant aggregation of these commodity values is the EVAO. It is not an indicator of the value of receipts of individual farms (turnover) but rather an indicator of the size or extent of agricultural activity. A three year average weight price is used to minimise the effects of both large movements in commodity prices and seasonal conditions which may otherwise unduly influence a business' EVAO. For businesses with no previously reported agricultural activity a derived value of operations based on turnover reported in its Businesses Activity Statement (BAS) is used as a proxy.

9 As noted in the publication Agricultural Census: Nature and Content, 2015-16 (cat. no 7100.1), the scope for the 2015-16 Agricultural Census was all agricultural businesses with an EVAO of \$40,000 or greater. This is a change from previous ABS Rural Environment and Agricultural Collections, where a scope of EVAO of \$5,000 or greater was used. The change in scope better aligns this collection with contemporary definitions of an agricultural business and reduces the overall reporting load for smaller agricultural businesses. It is proposed that only agricultural businesses with an EVAO of \$40,000 or greater will be in scope for ABS rural environmental and agricultural commodity collections in 2016-17 and beyond.

10 As a result of the change in scope, the estimates from the 2015-16 Agricultural Census will not be directly comparable to previous published Agricultural Censuses or annual Rural Environment and Agricultural Commodity Survey outputs. To address this, additional estimates have been produced from a number of rural environment and agricultural commodity collections from 2010-11 to 2014-15 using an EVAO of \$40,000 or greater. These estimates are now available at the national, state/territory levels and sub-state levels on the ABS website.

11 The 2015-16 Census final estimates are based on the achieved target response rate of 85% from an in-scope population of approximately 103,400 agricultural businesses.

RELIABILITY OF ESTIMATES (SAMPLE ERROR)

12 The estimates in this publication are based on information obtained from agricultural businesses that responded to the 2015-16 Agricultural Census. However, since not all of the businesses that were selected provided data, the estimates are subject to sampling variability; that is, they may differ from the figures that would have been produced if information had been collected from all businesses.

13 One measure of the likely difference is given by the standard error (SE) which indicates the extent to which an estimate might have varied by chance because only a sample was taken or received. There are approximately two chances in three that a 'sample' estimate will differ by less than one SE from the figure that would have been obtained if all establishments had responded or been reported for, and approximately 19 chances in 20 that the difference will be less than two SEs.

14 In this publication, 'sampling' variability of the estimates is measured by the relative standard error (RSE) which is obtained by expressing the SE as a percentage of the estimate to which it refers. Most published estimates have RSEs less than 10%. For some states and territories with limited production of certain commodities, RSEs are greater than 10%. Estimates that have an estimated RSE between 10% and 25% should be used with caution as they are subject to sampling variability too high for some purposes. Estimates with an RSE between 25% and 50% should also be used with caution as they are subject to sampling variability too high for most practical purposes. Estimates with an RSE greater than 50% are considered too unreliable for general use.

15 RSEs for all published estimates are available on request.

16 A table with RSEs for selected commodities follows:

RELATIVE STANDARD ERRORS OF SELECTED ESTIMATES - year ended 30 June 2016

	Aust.	NSW	Vic.	Qld	SA	WA	Tas.	NT	ACT
	%	%	%	%	%	%	%	%	%
Total - Area watered (ha)	0.5	1.0	1.0	0.9	1.4	3.3	1.7	4.3	—
Total - Volume applied (ML)	0.5	0.8	0.8	1.2	1.1	2.8	1.6	5.4	—
Pastures/cereal crops for grazing/fed off - Area watered (ha)	1.1	2.2	1.7	5.8	3.6	4.3	2.2	—	—
Pastures/cereal crops for grazing/fed off - Vol. (ML)	0.8	1.8	1.2	4.6	2.7	2.9	2.3	—	—
Rice - Area watered(ha)	1.8	1.7	39.0	19.5	—	45.3	—	28.6	—
Rice - Volume applied (ML)	1.7	1.7	39.0	17.1	—	45.3	—	28.6	—
Sugar cane - Area watered(ha)	1.0	7.3	41.1	1.0	—	35.6	—	—	—
Sugar cane - Volume applied (ML)	1.6	0.5	41.1	1.6	—	38.8	—	—	—
Cotton - Area watered(ha)	1.2	1.3	37.4	2.1	—	45.3	—	—	—
Cotton - Volume applied (ML)	1.2	1.2	37.4	2.6	—	45.3	—	—	—

- nil or rounded to zero (including null cells)

ROUNDING AND CONFIDENTIALITY

17 Where figures for individual states or territories have been suppressed for reasons of confidentiality, they have been included in relevant totals.

18 Where figures have been rounded, discrepancies may occur between sums of the component items and totals.

RELATED PUBLICATIONS

19 Final estimates from the 2015-16 Agricultural Census for agricultural land use, crop and horticultural area and production, livestock numbers and farm management, and demographics are available in Agricultural Commodities, Australia (cat. no. 7121.0) and land management will be published in Land Management and Farming in Australia (cat. no. 4627.0) in August 2017.

20 Final estimates of the gross value of principal agricultural commodities from the 2015-16 Value of Agricultural Commodities Produced (VACP) Collection are available in Value of Agricultural Commodities Produced, Australia, 2015-16 (cat. no. 7503.0).

21 Final estimates for the gross value of agricultural commodities that are produced with the assistance of irrigation will be released in late 2016 in Gross Value of Irrigated Agricultural Production (cat. no. 4610.0.55.008).

22 ABS publications related to the 2015-16 Agriculture Census can be accessed under the **Statistics** page on the ABS website. The ABS also issues a daily Release Advice on the website which details products to be released in the week ahead.

ABS DATA AVAILABLE ON REQUEST

23 As well as the statistics included in this and related publications, the ABS may have other relevant data available on request. Inquiries should be made to the National Information and Referral Service on 1300 135 070.

GENERAL ACKNOWLEDGMENT

24 ABS publications draw extensively on information provided freely by individuals, businesses, governments and other organisations. Their continued cooperation is very much appreciated. Without it, the wide range of statistics published by the ABS would not be available. Information received by the ABS is treated in strict confidence as required by the **Census and Statistics Act 1905**.

PRIVACY

25 The ABS Privacy Policy outlines how the ABS will handle any personal information that you provide to the ABS.

Abbreviations

ABBREVIATIONS

'000	thousand
AAE	Australian Agricultural Environment
ABARES	Australian Bureau of Agricultural and Resource Economics and Sciences
ABN	Australian Business Number
ABR	Australian Business Register
ABS	Australian Bureau of Statistics
ABSBR	Australian Bureau of Statistics Business Register
ACS	Agricultural Commodity Survey
ACT	Australian Capital Territory
ANZSIC	Australian and New Zealand Standard Industrial Classification
ASGS	Australian Statistical Geography Standard
ATO	Australian Taxation Office
Aust.	Australia
BAS	Business Activity Statement
cat. no.	catalogue number
csv	comma separated value file
EVAO	Estimated Value of Agricultural Operations
GL	gigalitre
ha	hectare
L	litres
MDB	Murray-Darling Basin

ML	megalitre
ML/ha	megalitres per hectare
np	not published
nec	not elsewhere classified
no.	number
NRM	natural resource management
NSW	New South Wales
NT	Northern Territory
Qld.	Queensland
REACS	Rural Environment and Agricultural Commodities Survey
RSE	relative standard error
SA	South Australia
SA2	Statistical Area 2
SA4	Statistical Area 4
SE	standard error
Tas.	Tasmania
Vic.	Victoria
WA	Western Australia
xls	Microsoft Excel spreadsheet file

Quality Declaration

QUALITY DECLARATION — SUMMARY

INSTITUTIONAL ENVIRONMENT

For information on the institutional environment of the Australian Bureau of Statistics (ABS), including the legislative obligations of the ABS, financing and governance arrangements, and mechanisms for scrutiny of ABS operations, please see ABS Institutional Environment.

RELEVANCE

Final estimates from the 2015–16 Agricultural Census will be presented in five publications:

Agricultural Commodities, Australia (cat. no. 7121.0) contains detailed statistics on land use, crop and horticultural area and production, livestock numbers and farm management and demographic information. The publication presents data on a national, state and territory basis. Sub-state level data, including Australian Statistical Geography Standard (ASGS) Statistical Area 4 (SA4) and Statistical Area 2 (SA2) levels and Natural Resource Management (NRM) regions, will be released in data cubes attached to the publication at a later date.

Water Use on Australian Farms (cat. no. 4618.0) contains detailed statistics on agricultural water use and sources of water, including details of pastures and crops irrigated, expense of irrigation and volume of water applied. The publication presents data on a national, state and territory basis. Sub-state level data, including ASGS SA4, SA2 and NRM regions and the Murray-Darling Basin region, will be released in data cubes attached to the publication at a later date.

Land Management and Farming in Australia (cat. no. 4627.0) provides information on a variety of management practices being adopted by Australian agricultural businesses including cropping and pasture management, soil management and fertiliser use. Data are presented at the Australian, State and Australian Agricultural Environment (AAE) regional levels.

Value of Agricultural Commodities Produced, Australia (cat. no. 7503.0) presents value of production statistics. It contains detailed statistics on the gross and local values of crops, livestock slaughters and disposals, and livestock products. The publication presents data on national, and on state and territory basis. Sub-state level data, including ASGS SA4, SA2 and NRM regions, will be released in data cubes attached to the publication at a later date.

Gross Value of Irrigated Agricultural Production (cat. no. 4610.0.55.008) presents the gross value of agricultural commodities that are produced with the assistance of irrigation. The publication presents data on a national, state and territory basis, NRM region and Murray-Darling Basin region.

TIMELINESS

Agricultural Commodities, Australia (cat. no. 7121.0), Value of Agricultural Commodities Produced, Australia (cat. no. 7503.0) and Water Use on Australian Farms (cat. no. 4618.0) will be published in July 2017. Land Management and Farming in Australia (cat. no. 4627.0) will be released in August 2017 and Gross Value of Irrigated Agricultural Production (cat. no. 4610.0.55.008) will be published in late 2017.

Preliminary data presenting principal crops and livestock numbers and gross values of production for principal agricultural commodities for the 2015–16 reference period were released in the publications Principal Agricultural Commodities, Australia, Preliminary (cat. no. 7111.0) and Value of Principal Agricultural Commodities Produced, Australia, Preliminary (cat. no. 7501.0) respectively, in January 2017.

ACCURACY

Data from the 2015–16 Agricultural Census are based on the achieved target response rate of 85% and have been extensively quality assured. The resultant estimates have been checked against earlier years' estimates and relevant other sources, to ensure the accuracy of estimates produced.

All estimates in this publication are subject to sampling error. For more information about these errors, refer to the Explanatory Notes within this release.

COHERENCE

The 2015-16 Agricultural Census was conducted using a frame based on the Australian Business Register (ABR). This is the same as the frame used for the 2005-06 Agricultural Census, for subsequent annual agricultural surveys, and for the 2010-11 Agricultural Census.

For the purposes of this collection a business (statistical unit) is identified as undertaking agricultural activity if any of the primary or secondary productive activities of that business fall with the Agriculture Subdivision (Subdivision 01) as defined by the 2006 edition of the Australian and New Zealand Standard Industrial Classification (ANZSIC). For more information, please refer to Australian and New Zealand Standard Industrial Classification (ANZSIC), 2006 (cat. no. 1292.0).

As noted in the publication *Agricultural Census: Nature and Content, 2015-16* (cat. no 7100.1), the scope for the 2015-16 Agricultural Census was all agricultural businesses with an EVAO of \$40,000 or greater. This is a change from previous ABS Rural Environment and Agricultural Collections, where a scope of EVAO of \$5,000 or greater was used. The change in scope better aligns this collection with contemporary definitions of an agricultural business and reduces the overall reporting load for smaller agricultural businesses. It is proposed that only agricultural businesses with an EVAO of \$40,000 or greater will be in scope for ABS rural environmental and agricultural commodity collections in 2016-17 and beyond. For more information about EVAO, refer to the Explanatory Notes within this release.

As a result of the change in scope, the estimates from the 2015-16 Agricultural Census will not be directly comparable to previous published Agricultural Censuses or annual Rural Environment and Agricultural Commodity Survey outputs. To address this, additional estimates have been produced from a number of rural environment and agricultural commodity collections from 2010-11 to 2014-15 using an EVAO of \$40,000 or greater. These estimates are now available at the national, state/territory levels and sub-state levels on the ABS website.

INTERPRETABILITY

The Agricultural Census and the Rural Environment and Agricultural Commodities Survey provide a broad range of data about Australian agricultural commodities through a suite of standard products or as data customised for individual requirements. Time series data are available for some estimates that were collected through previous surveys/censuses. Detailed explanatory notes are provided with each publication to assist users in determining and specifying their data requirements and to understand the concepts underlying the data.

ACCESSIBILITY

An extensive range of data is available from a variety of agriculture-based collections on the ABS website.

If the information you require is not available as a standard product or service, the ABS Consultancy Services can assist with customised services to suit your requirements. Inquiries should be made to the National Information and Referral Service on 1300 135 070.

© Commonwealth of Australia

All data and other material produced by the Australian Bureau of Statistics (ABS) constitutes Commonwealth copyright administered by the ABS. The ABS reserves the right to set out the terms and conditions for the use of such material. Unless otherwise noted, all material on this website – except the ABS logo, the Commonwealth Coat of Arms, and any material protected by a trade mark – is licensed under a Creative Commons Attribution 2.5 Australia licence